

# PROPELLER SHAFT

Part No.	Description.	Plate No.	No. per Unit.	Remarks.
C.3445	<b>PROPELLER SHAFT COMPLETE (48/0507)</b>		1	Fitted from Chassis No. 660001 to 660934 669001 to 669002 670001 to 671796 679001 to 679214
12	<b>Yoke, Flange (K2/2/239)</b>	K.1	2	
13	<b>Yoke, Sleeve (K2/3/68)</b>	K.2	1	
14	<b>Journal Assembly (K2/5/GB108)</b>	K.3	2	
18	<b>Bearing, Needle, Assembly (K2/6/38)</b>	K.4	8	
19	<b>Ring, Snap (K2/7/GB.19)</b>	K.5	8	
248	<b>Nipple, Grease, on Journal (94/GB.1598)</b>	K.6	2	
26	<b>Cap, Dust (3/14/39)</b>	K.7	1	
27	<b>Washer (Steel) in Dust Cap (3/15/33)</b>	K.8	1	
28	<b>Washer (Cork) in Dust Cap (K3/16/43)</b>	K.9	1	
K2/62/216/ GB.312/2621 }	<b>Shaft, Tubular, Assembly</b>	K.10	1	
C.3308	<b>Bolt, <math>\frac{3}{8}</math> A.N.F., securing Propeller Shaft to Rear Axle and Gearbox</b>	K11.	8	
NN.737/L	<b>Nut on Bolts</b>	K.12	8	
C.787	<b>Washer on Bolts</b>	K.13	16	
L.102.5/8U	<b>Pin, Split, securing Nuts</b>	K.14	8	
C.969	<b>Nipple, Grease, on Sleeve Yoke (Tecalemit NA. 5705)</b>	K.15	1	Fitted from Chassis No. 660001 to 660115 670001 to 670536
C.3044	<b>Nipple, Grease, on Sleeve Yoke (Tecalemit NA. 5701)</b>		1	Fitted to Chassis No. 660116 and subs. 669001 and subs. 670537 and subs. 679001 and subs.
46	<b>Unit Package (comprising Journal Assembly, Needle Bearings and Snap Rings) (K5/L.4)</b>		2	
1133	<b>End, Sliding, Assembly (comprising Flange Yoke, Sleeve Yoke, Dust Cap and Journal Assembly) (KR.1301/GB.3)</b>		1	
C.6768	<b>PROPELLER SHAFT COMPLETE (51/1123)</b>		1	Fitted to Chassis No. 660935 and subs. 669003 and subs. 671797 and subs. 679215 and subs.
2EX/51/1123	<b>Shaft, Tubular, Assembly All other items as for Propeller Shaft C.3445</b>		1	

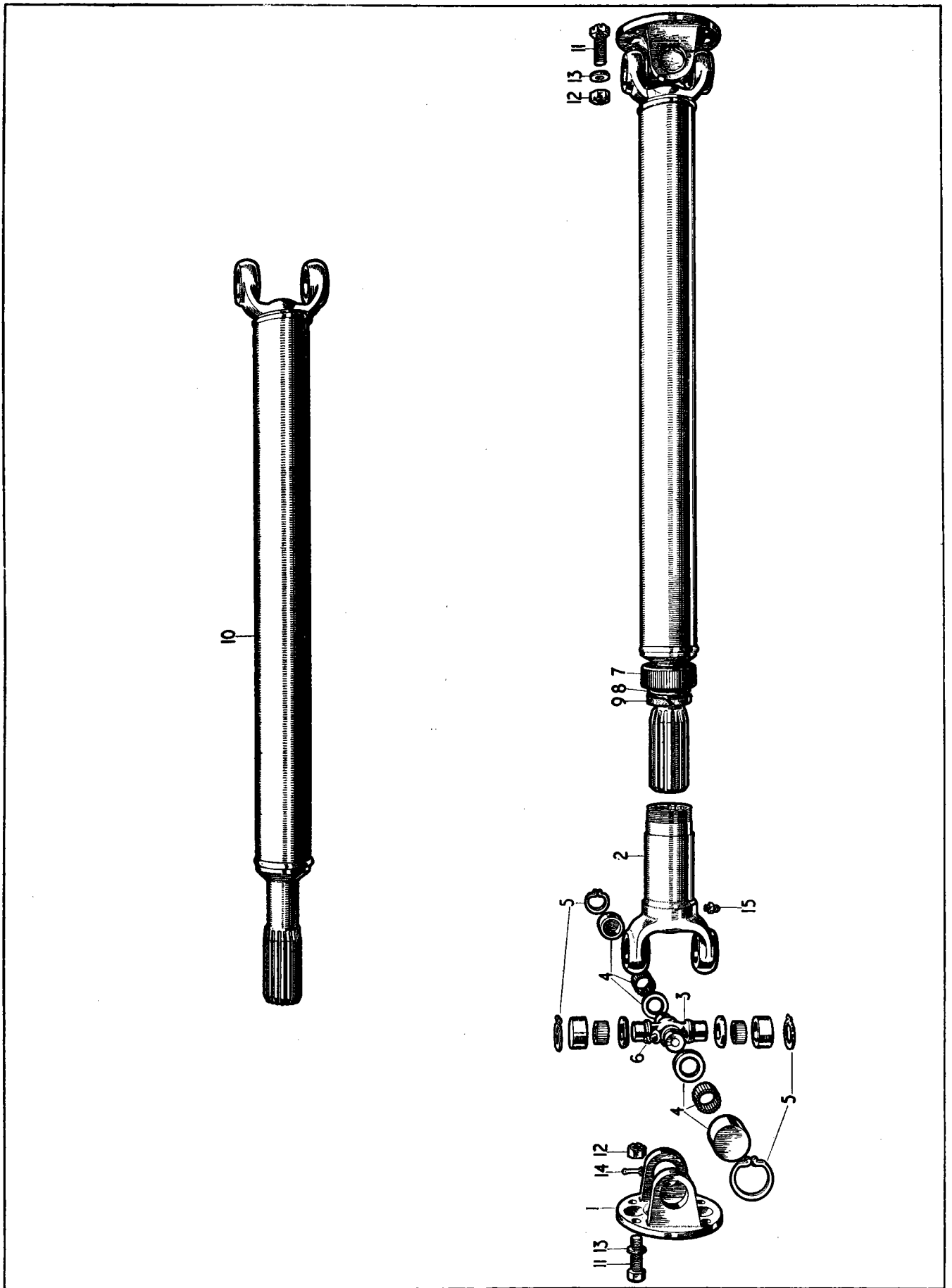


PLATE K.

# REAR AXLE

Part No.	Description.	Plate No.	No. per Unit.	Remarks.
C.3452	REAR AXLE ASSEMBLY (E.N.V.) (RATIO 3-64 : 1)		1	Fitted to the following Chassis 660001 to 660517 Also to 660700, 660728 and 660729 670001 to 671097 Also to 671130, 671131 and 671207
C.3821	REAR AXLE ASSEMBLY (E.N.V.) (RATIO 3-27 : 1)		1	
C.4460	REAR AXLE ASSEMBLY (E.N.V.) (RATIO 3-92 : 1)		1	
C.4461	REAR AXLE ASSEMBLY (E.N.V.) (RATIO 4-30 : 1)		1	
C.4462	REAR AXLE ASSEMBLY (E.N.V.) (RATIO 4-56 : 1)		1	
C.3452/1	REAR AXLE ASSEMBLY (E.N.V.) (RATIO 3-64 : 1)		1	Fitted to the following Chassis 660518 to 660570 Also to 660572, 660574 to 660579, 660581 to 660589, 660601 to 660605, 660608, 660616, 660623 to 660625, 660638, 660640, 660645, 660714 to 660727, 660729 to 660768, 660770 to 660802 671098 to 671106
C.3821/1	REAR AXLE ASSEMBLY (E.N.V.) (RATIO 3-27 : 1)		1	
C.4460/1	REAR AXLE ASSEMBLY (E.N.V.) (RATIO 3-92 : 1)		1	
C.4461/1	REAR AXLE ASSEMBLY (E.N.V.) (RATIO 4-30 : 1)		1	
C.4462/1	REAR AXLE ASSEMBLY (E.N.V.) (RATIO 4-56 : 1)		1	
C.5150	REAR AXLE ASSEMBLY (E.N.V.) (RATIO 3-64 : 1)		1	Fitted to the following Chassis 660571, 660573, 660580, 660590 to 660600, 660606, 660607, 660609 to 660615, 660617 to 660622, 660626 to 660637, 660639, 660641 to 660644, 660646 to 660699, 660701 to 660713, 660803 to 660934,  671107 to 671129, 671132 to 671206, 671208 to 671796 669001 and 669002 679001 to 679221
C.5151	REAR AXLE ASSEMBLY (E.N.V.) (RATIO 3-27 : 1)		1	
C.5152	REAR AXLE ASSEMBLY (E.N.V.) (RATIO 3-92 : 1)		1	
C.5153	REAR AXLE ASSEMBLY (E.N.V.) (RATIO 4-30 : 1)		1	
C.5154	REAR AXLE ASSEMBLY (E.N.V.) (RATIO 4-56 : 1)		1	
	<b>NOTE.—From Chassis No. 660935 onwards, 671797 onwards, 669003 onwards, 679222 onwards, either E.N.V. or Salisbury Rear Axles may be fitted</b>			
C.7301	REAR AXLE ASSEMBLY (E.N.V.) (RATIO 3-64 : 1)		1	<b>FOR USE WITH TANDEM CYLINDER BRAKES</b> from Chassis No. 660557 to 660979      669001 to 669002 671097 to 672048      679001 to 679621
819	AXLE CASING (A.259/1)	L.1	1	
804	Stud (Short) for the attachment of Pinion Housing (A.254/60)	L.2	8	
805	Stud (Long) for the attachment of Pinion Housing (A.254/61)	L.3	2	
5652	Nut on Studs (A.254/29)	L.4	10	
293	Washer, Spring, under Nuts (A.100/28)	L.5	10	
666	Pin, Dowel, locating Pinion Housing on Casing (A.238/27)	L.6	2	
803	Plug, Oil Drain (A.254/32)	L.7	1	
794	Nipple, Grease, on outer end of Axle Casing (A.254/4)	L.8	2	
373	PINION HOUSING (COMPLETE WITH BEARING CAPS AND BOLTS) (H.108/1)	L.9	1	
375	Bolt, securing Bearing Caps (H.108/3)	L.10	4	
294	Plate, locking Bearing Cap Bolts (H.101/4)	L.11	4	
802	Washer, Jointing, between Pinion Housing and Axle Casings (A.254/31)	L.12	1	
345	Plug, Oil Filler (H.106/28)	L.13	1	
5533	Washer, Jointing, for Oil Filler Plug (NM.120/29)	L.14	1	
346	Dipstick (H.106/30)	L.15	1	

# REAR AXLE

Part No.	Description.	Plate No.	No. per Unit.	Remarks.
379	<b>DIFFERENTIAL UNIT (RATIO 3-64 : 1)</b> (H.108/14/51)		1	Fitted to the following Chassis 660001 to 660570 Also to 660572, 660574 to 660579, 660581 to 660589, 660601 to 660605, 660608, 660616, 660623 to 660625, 660638, 660640, 660645, 660700, 660714 to 660802 670001 to 671106 Also to 671130, 671131, 671207
380	<b>DIFFERENTIAL UNIT (RATIO 3-27 : 1)</b> (H.108/18/59)		1	
378	<b>DIFFERENTIAL UNIT (RATIO 3-92 : 1)</b> (H.108/12/47)		1	
377	<b>DIFFERENTIAL UNIT (RATIO 4-30 : 1)</b> (H.108/10/43)		1	
376	<b>DIFFERENTIAL UNIT (RATIO 4-56 : 1)</b> (H.108/9/41)		1	
496	Case, Differential (M.146/1/2)	L.16	1 pair	<b>SUPPLIED ONLY IN PAIRS</b>
498	Gear, Side, for Differential (M.146/3)	L.17	2	
447	Piece, Star, for Differential Pinion Mate Gears (M.133/5)	L.18	1	
499	Gear, Differential Pinion Mate (M.146/4)	L.19	4	
451	Washer, Thrust, for Side Gears (M.135/13)	L.20	2	
452	Washer, Thrust, for Pinion Mate Gears (M.135/14)	L.21	4	
500	Bolt, securing Differential Case (M.146/6)	L.22	8	
501	Plate, locking Bolts (M.146/8)	L.23	4	
610	<b>Crown-Wheel and Pinion (Ratio 3.64 : 1)</b> (Supplied only in pairs) (HP.178)	L.24	1 pair	
613	<b>Crown-Wheel and Pinion (Ratio 3.27 : 1)</b> (Supplied only in pairs) (HP.186)	L.24	1 pair	
614	<b>Crown-Wheel and Pinion (Ratio 3.92 : 1)</b> (Supplied only in pairs) (HP.188)	L.24	1 pair	
606	<b>Crown-Wheel and Pinion (Ratio 4.30 : 1)</b> (Supplied only in pairs) (FHP.1000)	L.24	1 pair	
7407	<b>Crown-Wheel and Pinion (Ratio 4.56 : 1)</b> (Supplied only in pairs) (FHP.1001)	L.24	1 pair	
502	Bolt, securing Crown-Wheel to Differential Case (M.146/9)	L.25	10	
503	Plate, locking Crown-Wheel Bolts (M.146/11)	L.26	5	
384	Bearing, Roller, Pinion Head (Timken 3490/3420) (H.108/40)	L.27	1	
315	Shim, adjusting Pinion Head Bearing (.004") (H.105/38)	L.28	As req'd.	
316	Shim, adjusting Pinion Head Bearing (.006") (H.105/38A)	L.28	As req'd.	
318	Shim, adjusting Pinion Head Bearing (.010") (H.105/38B)	L.28	As req'd.	
385	Bearing, Roller, Pinion Shank (Timken 02475/02420) (H.108/41)	L.29	1	
319	Shim, adjusting Pinion Shank Bearing (.004") (H.105/39)	L.30	As req'd.	
320	Shim, adjusting Pinion Shank Bearing (.006") (H.105/39A)	L.30	As req'd.	
321	Shim, adjusting Pinion Shank Bearing (.010") (H.105/39B)	L.30	As req'd.	
343	Piece, Distance, between Shank of Pinion and Shank Adjusting Shims (H.106/8)	L.31	1	
314	Seal, Oil, in end of Pinion Housing (H.105/22)	L.32	1	
807	Bearing, Roller, for Differential Box (Timken 25577/25522) (A.254/63)	L.33	2	
382	Nut, adjusting Differential Box (H.108/33)	L.34	2	
383	Plate, locking Adjusting Nut (H.108/34)	L.35	2	
406	Screw, Set, securing Adjusting Nut Lock-Plate to Bearing Cap (NM.119/36)	L.36	2	
5616	<b>DIFFERENTIAL UNIT (RATIO 3-64 : 1)</b> (M.162/14/51)		1	Fitted to the following Chassis 660571, 660573, 660580, 660590 to 660600, 660606, 660607, 660609 to 660615, 660617 to 660622, 660626 to 660637, 660639, 660641 to 660644, 660646 to 660699, 660701 to 660713, 660803 to 660934, 671107 to 671129, 671132 to 671206, 671208 to 671796 669001 and 669002 679001 to 679221
5617	<b>DIFFERENTIAL UNIT (RATIO 3-27 : 1)</b> (M.162/18/59)		1	
5615	<b>DIFFERENTIAL UNIT (RATIO 3-92 : 1)</b> (M.162/12/47)		1	
7409	<b>DIFFERENTIAL UNIT (RATIO 4-30 : 1)</b> (M.162/10/43)		1	
7408	<b>DIFFERENTIAL UNIT (RATIO 4-56 : 1)</b> (M.162/9/41)		1	

# REAR AXLE

Part No.	Description.	Plate No.	No. per Unit.	Remarks.
<b>DIFFERENTIAL UNIT (CONTINUED)</b>				
592	Case, Differential (M.162/1)		1	
594	Gear, Side, for Differential (M.162/3)		2	
596	Shaft, Cross, for Differential Pinion Mate Gears (M.162/5)		1	
595	Gear, Differential Pinion Mate (M.162/4)		2	
597	Lock-Pin through Differential Case and Cross Shaft (M.162/6)		1	
598	Washer, Thrust, for Side Gears (M.162/13)		2	
599	Washer, Thrust, for Pinion Mate Gears (M.162/14)		2	
600	Spacer Block on Shaft (M.162/15)		1	
601	Bearing, Roller, for Differential Case (Timken 25522/25580) (M.162/16)		2	
For all other Spares, see Differential Unit H.108				
820	<b>REAR AXLE SHAFT (WITH THRUST BUTTON) (ALTERNATIVE TO A.259/110) (A.259/11)</b>	L.37	2	Fitted to the following Chassis 660001 to 660570 Also to 660572, 660574 to 660579, 660581 to 660589, 660601 to 660605, 660608, 660616, 660623 to 660625, 660638, 660640, 660645, 660700, 660714 to 660802 670001 to 671106 Also to 671130, 671131, 671207
820	<b>REAR AXLE SHAFT (ALTERNATIVE TO A.259/11) (A.259/110)</b>		2	
822	<b>REAR AXLE SHAFT (A.272/11)</b>		2	Fitted to the following Chassis 660571, 660573, 660580, 660590 to 660600, 660606, 660607, 660609 to 660615, 660617 to 660622, 660626 to 660637, 660639, 660641 to 660644, 660646 to 660699, 660701 to 660713, 660803 to 660934 671107 to 671129, 671132 to 671206, 671208 to 671796
662	Button, Thrust, on Inner End of Axle Shafts (A.238/11A)	L.38	2	<b>USED ONLY WITH SHAFT A.259/11</b>
821	Piece, Distance, on Shafts (A.259/16)	L.39	2	
810	Ring, Sealing (Rubber) in Distance Piece (A.254/66)		2	
808	Housing for Hub Bearings (A.254/65)	L.40	2	
656	Shim, Adjusting, between Bearing Housing and Brake Anchor Plate (.002") (A.238/10)	L.41	As req'd.	
657	Shim, Adjusting, between Bearing Housing and Brake Anchor Plate (.006") (A.238/10A)	L.41	As req'd.	
658	Shim, Adjusting, between Bearing Housing and Brake Anchor Plate (.010") (A.238/10B)	L.41	As req'd.	
659	Shim, Adjusting, between Bearing Housing and Brake Anchor Plate (.032") (A.238/10C)	L.41	As req'd.	
660	Shim, Adjusting, between Bearing Housing and Brake Anchor Plate (.062") (A.230/10D)	L.41	As req'd.	
801	Seal, Oil, in Bearing Housings (A.254/22)	L.42	2	
807	Bearing, Roller, for Hubs (Timken 25577/25522) (A.254/63)	L.43	2	
664	Nut, locking Hub Bearing on Axle Shaft (A.238/20)	L.44	2	
665	Washer, Tab, for Locknut (A.238/21)	L.45	2	
663	Washer, Tongued, between Tab Washer and Hub Bearing (A.238/14)	L.46	2	
799	Seal, Oil, for Axle Shaft (A.254/12)	L.47	2	
796	Bolt (Short), securing Bearing Housing and Brake Anchor Plate to Axle Casing (A.254/6)	L.48	8	
812	Bolt (Long), securing Bearing Housing and Brake Anchor Plate to Axle Casing (A.254/67)		4	
797	Nut on Bolts (A.254/7)	L.49	12	
FG106	Washer, Spring, under Nuts (A.254/62)	L.50	12	
287	Pin, Split, through Nuts (A.100/9)	L.51	12	
C.3040	Stud for Brake Drum and Road Wheels	L.52	10	
C.3076	Nipple, Grease, on Hubs		2	
5534	<b>PINION COMPANION FLANGE (NM.121/23)</b>	L.53	1	
344	Nut, securing Companion Flange to Pinion (H.106/25)	L.54	1	
295	Pin, Split, through Nut (H.101/27)	L.55	1	

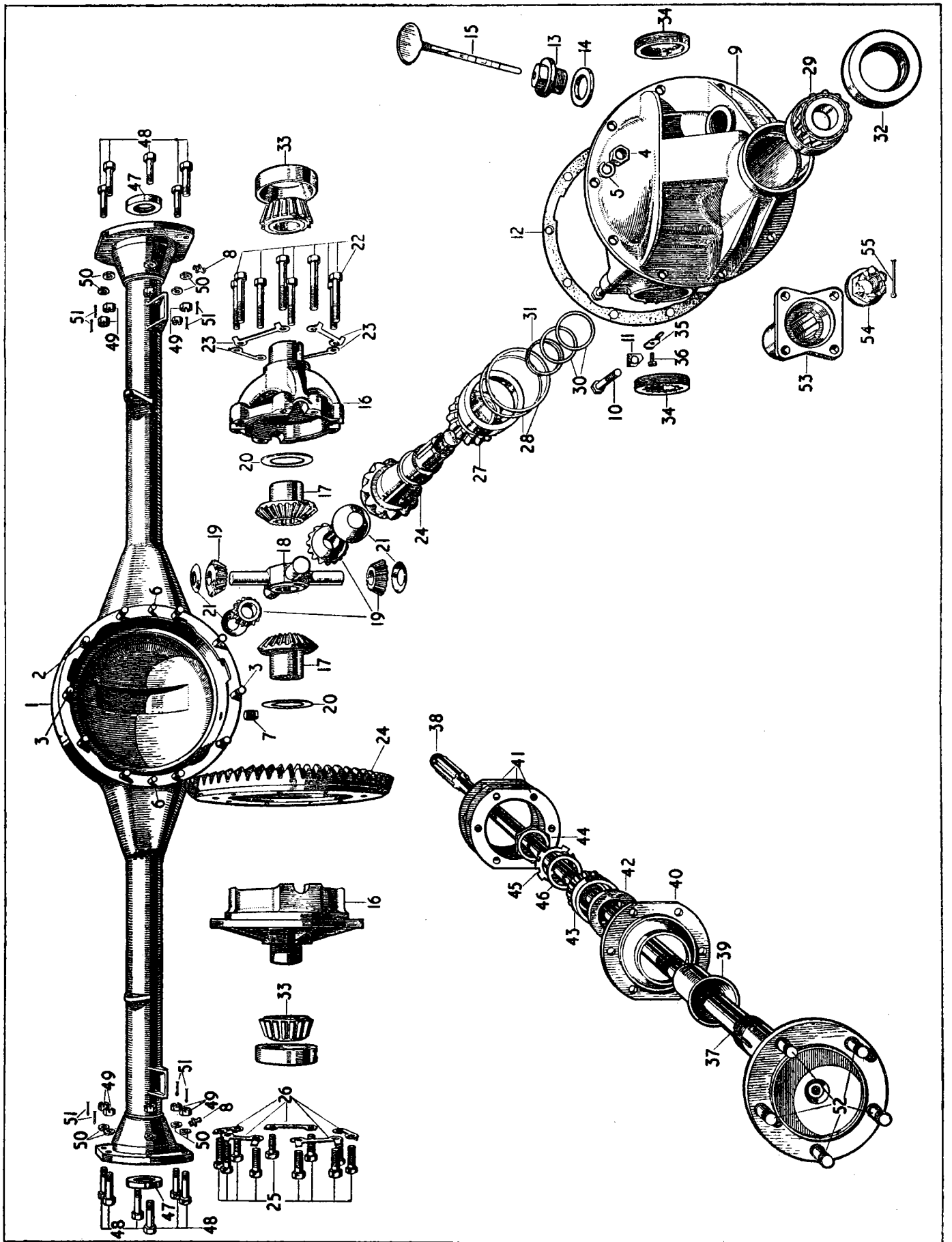


PLATE L.

# REAR AXLE

Part No.	Description.	Plate No.	No. per Unit.	Remarks.
C.6687	<b>REAR AXLE ASSEMBLY (SALISBURY 2HA) (RATIO 3-77 : 1)</b>		1	<b>NOTE.—FROM CHASSIS No.</b> 660935 ONWARDS 669003 ONWARDS 671797 ONWARDS 679222 ONWARDS EITHER SALISBURY OR E.N.V. REAR AXLES MAY BE FITTED
C.5762	<b>REAR AXLE ASSEMBLY (SALISBURY 2HA) (RATIO 4-09 : 1)</b>		1	
C.5763	<b>REAR AXLE ASSEMBLY (SALISBURY 2HA) (RATIO 4-27 : 1)</b>		1	
3883	<b>Carrier and Tube Assembly (2HA-101/8)</b>	XL.1	1	
74	<b>Screw, Set, securing Differential Caps (S.A.E. Thread) (8-73-3136)</b>	XL.2	4	
76	<b>Lock Washer on Setscrews (8-75-GB.39)</b>	XL.3	4	
3872	<b>Cover for Carrier (2HA-064)</b>	XL.4	1	
3823	<b>Plug for Filler and Drain apertures (HA-059)</b>	XL.5	2	
3847	<b>Gasket for Cover (2HA-026)</b>	XL.7	1	
53	<b>Screw, Set, securing Cover to Carrier (S.A.E. Thread) (6-73-1110)</b>	XL.8	10	
61	<b>Lock Washer for Cover Screws (6-75-19)</b>	XL.9	10	
3878	<b>Case, Differential, Assy. (2HA-082/2)</b>		1	
3845	<b>Bearing, Roller, on Differential Case (Timken 25577-25523) (2HA-024)</b>	XL.10	2	
3863	<b>Shim, adjusting Differential (.003" thick) (2HA-046)</b>	XL.11	2	<b>USE SHIM OF DESIRED THICKNESS</b>
3864	<b>Shim, adjusting Differential (.005" thick) (2HA-047)</b>	XL.11	2	
3865	<b>Shim, adjusting Differential (.010" thick) (2HA-048)</b>	XL.11	2	
3866	<b>Shim, adjusting Differential (.030" thick) (2HA-049)</b>	XL.11	2	
3889	<b>Crown Wheel and Pinion (Ratio 3-77 : 1) (2HA-105/11)</b>	XL.12	1	<b>NOT INTERCHANGEABLE WITH RATIOS SHOWN ON PAGE 28E</b>
3888	<b>Crown Wheel and Pinion (Ratio 4-09 : 1) (2HA-105/10)</b>	XL.12	1	
3891	<b>Crown Wheel and Pinion (Ratio 4-27 : 1) (2HA-105/13)</b>	XL.12	1	
3875	<b>Screw, Set, securing Crown Wheel to Differential Case (S.A.E. Thread) (2HA-075/1)</b>	XL.13	10	
3873	<b>Lock Strap for Crown Wheel Setscrews (2HA-074)</b>	XL.14	5	
3844	<b>Bearing, Roller, at inner end of Pinion (Timken 31593-31520) (2HA-023)</b>	XL.15	1	
3860	<b>Shim, Inner, adjusting Pinion (.003" thick) (2HA-043)</b>	XL.16	2	<b>USE SHIM OF DESIRED THICKNESS</b>
3861	<b>Shim, Inner, adjusting Pinion (.005" thick) (2HA-044)</b>	XL.16	2	
3862	<b>Shim, Inner, adjusting Pinion (.010" thick) (2HA-045)</b>	XL.16	2	
3839	<b>Spacer Tube, between inner and outer Bearing (2HA-018)</b>	XL.17	1	
3856	<b>Shim, Outer, adjusting Pinion (.003" thick) (2HA-039)</b>	XL.18	2	<b>USE SHIM OF DESIRED THICKNESS</b>
3857	<b>Shim, Outer, adjusting Pinion (.005" thick) (2HA-040)</b>	XL.18	2	
3858	<b>Shim, Outer, adjusting Pinion (.010" thick) (2HA-041)</b>	XL.18	2	
3859	<b>Shim, Outer, adjusting Pinion (.030" thick) (2HA-042)</b>	XL.18	2	
3843	<b>Bearing, Roller, at outer end of Pinion (Timken 02872-02820) (2HA-022)</b>	XL.19	1	
3853	<b>Slinger, Oil, on Pinion (2HA-036)</b>	XL.20	1	
3840	<b>Seal, Oil, on Pinion (2HA-019)</b>	XL.21	1	
3841	<b>Gasket for Pinion Oil Seal (2HA-020)</b>	XL.22	1	
3879	<b>Flange, Companion, Assembly (2HA-083)</b>	XL.23	1	
112	<b>Nut, securing Flange to Pinion (S.A.E. Thread) (12-74-121)</b>	XL.24	1	
114	<b>Washer under Nut (12-75-GB.29)</b>	XL.25	1	
68	<b>Pin, Cotter, securing Nut (7-72-39)</b>	XL.26	1	
3878	<b>DIFFERENTIAL CASE ASSEMBLY (2HA-082/2)</b>		1	<b>SUITABLE FOR 3-77 : 1, 4-09 : 1 and 4-27 : 1 RATIOS</b>
3831	<b>Case, Differential (2HA-006/4)</b>	XL.27	1	
3929	<b>Gear, Side, for Differential (4HA-007)</b>	XL.28	2	
3855	<b>Washer, Thrust, for Side Gears (2HA-038)</b>	XL.29	2	
3835	<b>Gear, Differential Pinion Mate (2HA-008/1)</b>	XL.30	2	
3854	<b>Washer, Thrust, for Pinion Mate Gears (2HA-037)</b>	XL.31	2	
3837	<b>Shaft for Pinion Mate Gears (2HA-012)</b>	XL.32	1	
3932	<b>Spacer, on Shaft (4HA-033)</b>	XL.33	1	
3838	<b>Pin, locking Pinion Mate Gear Shaft in Differential Case (2HA-013)</b>	XL.34	1	

# REAR AXLE

Part No.	Description.	Plate No.	No. per Unit.	Remarks.
3879	<b>PINION COMPANION FLANGE ASSEMBLY</b> (2HA-083)	XL.23	1	
3842	Shield, Dust, for Companion Flange (2HA-021)		1	
3924	<b>REAR AXLE SHAFT</b> (4HA-005)	XL.35	2	
C.7356	Key, securing Hub to Shaft (Salisbury 2HA-029)	XL.36	2	
3848	Seal, Oil, for Shafts, in end of Carrier (2HA-027)	XL.37	2	
3846	Bearing, Roller, for Hubs (Timken 25877-25821) (2HA-025)	XL.38	2	
131	Nut, Slotted, on Axle Shafts (S.A.E. Thread) (16-74-71)	XL.39	2	
C.1479	Washer under Nuts (Salisbury 16-75-GB.39)	XL.40	2	
73	Pin, Cotter, securing Nuts (8-72-19)	XL.41	2	
C.6774	<b>REAR BRAKE ASSEMBLY, R.H. (LOCKHEED</b> <b>30422)</b>		1	
C.6775	<b>REAR BRAKE ASSEMBLY, L.H. (LOCKHEED</b> <b>30423)</b>		1	
3867	Shim, adjusting Hub Bearing (.003" thick) (2HA-050)	XL.42	2	} <b>USE SHIM OF DESIRED THICKNESS</b>
3868	Shim, adjusting Hub Bearing (.005" thick) (2HA-051)	XL.42	2	
3869	Shim, adjusting Hub Bearing (.010" thick) (2HA-052)	XL.42	2	
3870	Shim, adjusting Hub Bearing (.030" thick) (2HA-053)	XL.42	2	
3933	Plate, retaining Hub Bearings (4HA-035)	XL.43	2	
C.1483	Gasket, between Backplate and Oil Seal Container (Salisbury 2HA-031)	XL.44	2	
C.1481	Seal, Oil, on Backplates (Salisbury 2HA-032)	XL.45	2	
C.1480	Container for Oil Seal (Salisbury 2HA-030)	XL.46	2	
57	Screw, Set, securing Backplate to Carrier (S.A.E. Thread) (6-73-2119)	XL.47	10	
60	Nut on Setscrews (S.A.E. Thread) (6-74-11)	XL.48	10	
62	Washer, locking Nuts (6-75-GB.49)	XL.49	10	
C.5064	<b>*REAR AXLE HUB</b>	XL.50	2	
C.7228	<b>*BRAKE DRUM</b>	XL.51	2	
C.3078	*Screw, Set, locating Brake Drums on Hubs	XL.52	4	
C.3040	*Stud, securing Brake Drums and Road Wheels to Hubs	XL.53	10	
C.3041	*Nut on Studs	XL.54	10	
C.970	Nipple, Grease, on Axle Tubes (Tecalemit NA.5797)	XL.55	2	
	<b>NOTE.—Items marked * are for use with "Disc" Type Road Wheels only</b>			
	<b>THE FOLLOWING ITEMS ARE REQUIRED FOR "SPECIAL EQUIPMENT" MODELS (i.e., Cars bearing the prefix "S." to the Chassis number)</b>			
C.6022	Hub, right hand, Rear		1	
C.6023	Hub, left hand, Rear		1	
C.6277	Stud in Hubs		10	
NN.143/L	Nut on Hub Studs		10	
C.1096/1	Washer, Spring, under Nuts		10	
C.1102	Hub Cap, right hand		1	
C.1103	Hub Cap, left hand		1	
C.7273	Brake Drum, Rear		2	<b>FOR USE ONLY WITH WIRE WHEELS</b> up to Chassis No. 672646 and 679894
C.6025	Brake Drum, Rear		2	<b>FOR USE ONLY WITH WIRE WHEELS</b> for Chassis No. 660001 and subs. 669001 and subs. 672647 and subs. 679895 and subs.



# REAR AXLE

Part No.	Description.	Plate No.	No. per Unit.	Remarks.
C.4024	<b>ABUTMENT BRACKET FOR HAND-BRAKE CABLE, L.H.</b>		1	} Fitted to Chassis No. 660001 and subs. 670001 and subs.
C.4023	<b>ABUTMENT BRACKET FOR HAND-BRAKE CABLE, R.H.</b>		1	
C.3116/3 C.741	Nut, securing Abutment Brackets Washer, Shakeproof, under Nuts		2 2	
C.7228	<b>BRAKE DRUM</b>		2	} <b>FOR USE WITH "DISC" TYPE ROAD WHEELS ONLY</b>
C.3078	Screw, Set, locating Brake Drum on Axle Shaft Flange		4	
C.3041	Nut, securing Road Wheels and Brake Drums		10	

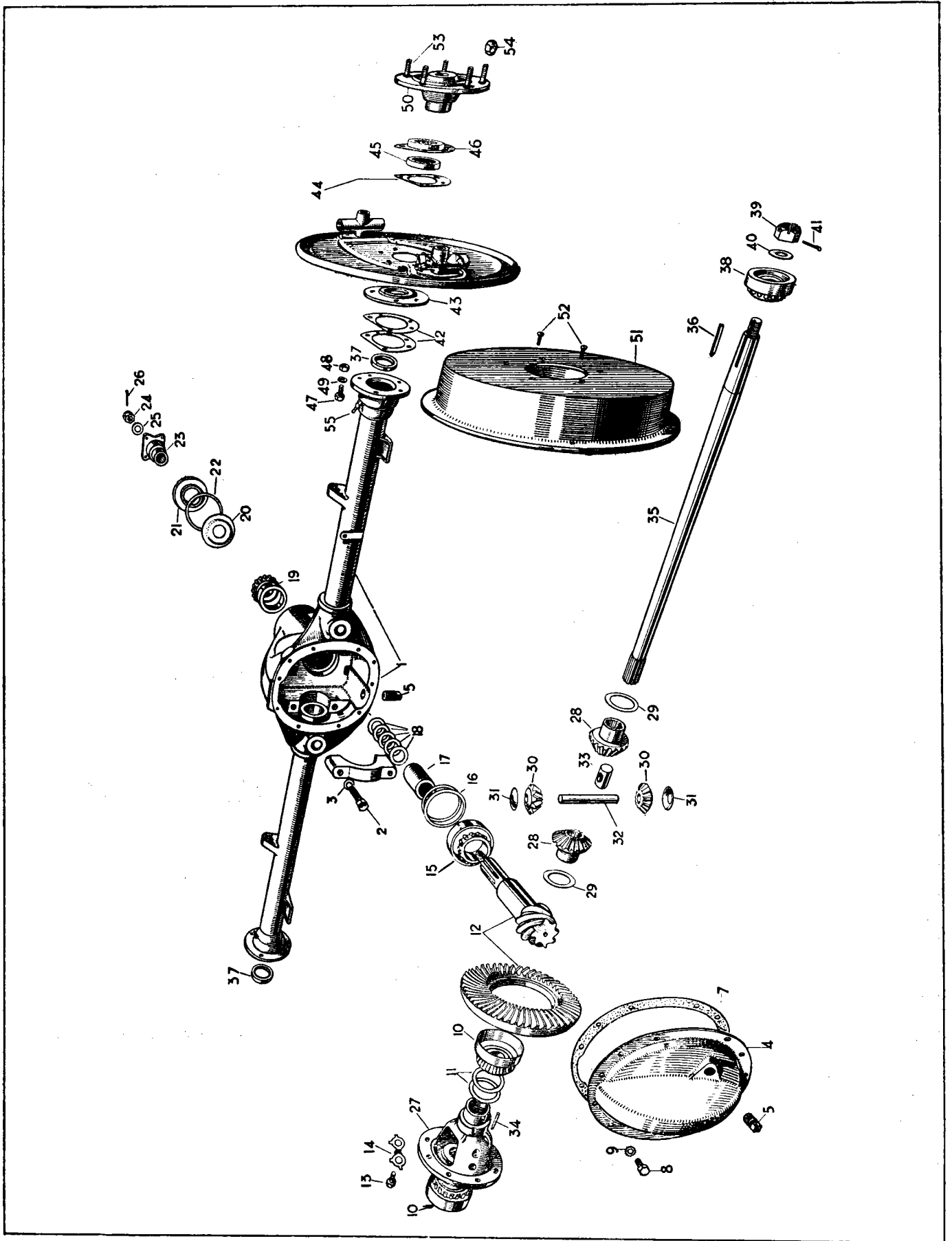


PLATE XL

# REAR AXLE

Part No.	Description.	Plate No.	No. per Unit.	Remarks.
C.5764	<b>REAR AXLE ASSEMBLY (SALISBURY 4HA) (RATIO 2-93 : 1)</b>		1	NOTE.—FROM CHASSIS No. 660935 ONWARDS 669003 ONWARDS 671797 ONWARDS 679222 ONWARDS EITHER SALISBURY OR E.N.V. REAR AXLES MAY BE FITTED
C.5759	<b>REAR AXLE ASSEMBLY (SALISBURY 4HA) (RATIO 3-31 : 1)</b>		1	
C.5760	<b>REAR AXLE ASSEMBLY (SALISBURY 4HA) (RATIO 3-54 : 1)</b>		1	
C.5761	<b>REAR AXLE ASSEMBLY (SALISBURY 4HA) (RATIO 3-77 : 1)</b>		1	
C.5762	<b>REAR AXLE ASSEMBLY (SALISBURY 4HA) (RATIO 4-09 : 1)</b>		1	
C.5763	<b>REAR AXLE ASSEMBLY (SALISBURY 4HA) (RATIO 4-27 : 1)</b>		1	
3943	<b>Carrier and Tube Assembly (4HA-101)</b>	XL.1	1	
74	<b>Screw, Set, securing Differential Caps (S.A.E. Thread) (8-73-3136)</b>	XL.2	4	
76	<b>Lock Washer on Setscrews (8-75-GB.39)</b>	XL.3	4	
3939	<b>Cover for Carrier (4HA-064)</b>	XL.4	1	
3823	<b>Plug for Filler and Drain apertures (HA.059)</b>	XL.5	2	
3931	<b>Gasket for Cover (4HA-026)</b>	XL.7	1	
44	<b>Screw, Set, securing Cover to Carrier (S.A.E. Thread) (5A-73-110)</b>	XL.8	10	
47	<b>Lock Washer for Cover Screws (5-75-19)</b>	XL.9	10	
3941	<b>Case, Differential, Assy. (4HA-082)</b>		1	
3845	<b>Bearing, Roller, on Differential Case (Timken 25577-25523) (2HA-024)</b>	XL.10	2	
3935	<b>Shim, adjusting Differential (.003" thick) (4HA-046)</b>	XL.11	2	} <b>USE SHIM OF DESIRED THICKNESS</b>
3936	<b>Shim, adjusting Differential (.005" thick) (4HA-047)</b>	XL.11	2	
3937	<b>Shim, adjusting Differential (.010" thick) (4HA-048)</b>	XL.11	2	
3938	<b>Shim, adjusting Differential (.030" thick) (4HA-049)</b>	XL.11	2	
3947	<b>Crown Wheel and Pinion (Ratio 2-93 : 1) (4HA-105/6)</b>	XL.12	1	
3948	<b>Crown Wheel and Pinion (Ratio 3-31 : 1) (4HA-105/8)</b>	XL.12	1	} <b>NOT INTERCHANGEABLE WITH RATIOS SHOWN ON PAGE 28C</b>
3949	<b>Crown Wheel and Pinion (Ratio 3-54 : 1) (4HA-105/9)</b>	XL.12	1	
3950	<b>Crown Wheel and Pinion (Ratio 3-77 : 1) (4HA-105/7)</b>	XL.12	1	
3952	<b>Crown Wheel and Pinion (Ratio 4-09 : 1) (4HA-105/13)</b>		1	
3951	<b>Crown Wheel and Pinion (Ratio 4-27 : 1) (4HA-105/12)</b>		1	
3919	<b>Screw, Set, securing Crown Wheel to Differential Case (S.A.E. Thread) (3HA-075/2)</b>	XL.13	10	
3940	<b>Lock Strap for Crown Wheel Setscrews (4HA-074)</b>	XL.14	5	
3844	<b>Bearing, Roller, at inner end of Pinion (Timken 31593-31520) (2HA-023)</b>	XL.15	1	
3860	<b>Shim, Inner, adjusting Pinion (.003" thick) (2HA-043)</b>	XL.16	2	} <b>USE SHIM OF DESIRED THICKNESS</b>
3861	<b>Shim, Inner, adjusting Pinion (.005" thick) (2HA-044)</b>	XL.16	2	
3862	<b>Shim, Inner, adjusting Pinion (.010" thick) (2HA-045)</b>	XL.16	2	
3856	<b>Shim, Outer, adjusting Pinion (.003" thick) (2HA-039)</b>	XL.18	2	
3857	<b>Shim, Outer, adjusting Pinion (.005" thick) (2HA-040)</b>	XL.18	2	
3858	<b>Shim, Outer, adjusting Pinion (.010" thick) (2HA-041)</b>	XL.18	2	
3859	<b>Shim Outer, adjusting Pinion (.030" thick) (2HA-042)</b>	XL.18	2	
3843	<b>Bearing, Roller, at outer end of Pinion (Timken 02872-02820) (2HA-022)</b>	XL.19	1	
3934	<b>Slinger, Oil, on Pinion (4HA-036)</b>	XL.20	1	
3840	<b>Seal, Oil, on Pinion (2HA-019)</b>	XL.21	1	
3841	<b>Gasket for Pinion Oil Seal (2HA-020)</b>	XL.22	1	
3879	<b>Flange, Companion, Assembly (2HA-083)</b>	XL.23	1	
115	<b>Nut, securing Flange to Pinion (S.A.E. Thread) (12LN-NF.9)</b>	XL.24	1	
114	<b>Washer under Nut (12-75-GB.29)</b>	XL.25	1	

# REAR AXLE

Part No.	Description.	Plate No.	No. per Unit.	Remarks.
3942	<b>DIFFERENTIAL CASE ASSEMBLY (4HA-082/1)</b>		1	<b>SUITABLE FOR 3-77 : 1 RATIO</b>
3928	Case, Differential (4HA-006/1)	XL.27	1	Suitable for 3-77 : 1 Ratio
3941	<b>DIFFERENTIAL CASE ASSEMBLY (4HA-082)</b>		1	<b>Suitable for 2-93 : 1, 3-31 : 1 and 3-54 : 1 Ratios</b>
3927	Case, Differential (4HA-006)	XL.27	1	
3929	Gear, Side, for Differential (4HA-007)	XL.28	2	
3855	Washer, Thrust, for Side Gears (2HA-038)	XL.29	2	
3835	Gear, Differential Pinion Mate (2HA-008/1)	XL.30	2	
3854	Washer, Thrust, for Pinion Mate Gears (2HA-037)	XL.31	2	
3837	Shaft for Pinion Mate Gears (2HA-012)	XL.32	1	
3932	Spacer, on Shaft (4HA-033)	XL.33	1	
3838	Pin, locking Pinion Mate Gear Shaft in Differential Case (2HA-013)	XL.34	1	
3879	<b>PINION COMPANION FLANGE ASSEMBLY (2HA-083)</b>	XL.23	1	
3842	Shield, Dust, for Companion Flange (2HA-021)		1	
3924	<b>REAR AXLE SHAFT (4HA-005)</b>	XL.35	2	
C.7356	Key, securing Hub to Shaft (Salisbury 2HA-029)	XL.36	2	
3848	Seal, Oil, for Shaft, in end of Carrier (2HA-027)	XL.37	2	
3846	Bearing, Roller, for Hubs (Timken 25877-25821) (2HA-025)	XL.38	2	
131	Nut, Slotted, on Axle Shafts (S.A.E. Thread) (16-74-71)	XL.39	2	
C.1479	Washer under Nuts (Salisbury 16-75-GB.39)	XL.40	2	
73	Pin, Cotter, securing Nuts (8-72-19)	XL.41	2	
C.6674	<b>REAR BRAKE ASSEMBLY, R.H. (LOCKHEED 31415)</b>		1	Fitted from Chassis No. 660935 to 661086 671797 to 674075 669003 to 669033 679222 to 681206 667001 only 677001 to 677491
C.6675	<b>REAR BRAKE ASSEMBLY, L.H. (LOCKHEED 31416)</b>		1	
C.7826	<b>REAR BRAKE ASSEMBLY, R.H. (LOCKHEED 35430)</b>		1	Fitted to Chassis No. 661087 and subs. 674076 and subs. 669034 and subs. 681207 and subs. 667002 and subs. 677492 and subs.
C.7827	<b>REAR BRAKE ASSEMBLY, L.H. (LOCKHEED 35431)</b>		1	
3867	Shim, adjusting Hub Bearing (.003" thick) (2HA-050)	XL.42	2	<b>USE SHIM OF DESIRED THICKNESS</b>
3868	Shim, adjusting Hub Bearing (.005" thick) (2HA-051)	XL.42	2	
3869	Shim, adjusting Hub Bearing (.010" thick) (2HA-052)	XL.42	2	
3870	Shim, adjusting Hub Bearing (.030" thick) (2HA-053)	XL.42	2	
3933	Plate, retaining Hub Bearings (4HA-035)	XL.43	2	
C.1483	Gasket, between Backplate and Oil Seal Container (Salisbury 2HA-031)	XL.44	2	
C.1481	Seal, Oil, on Backplate (Salisbury 2HA-032)	XL.45	2	
C.1480	Container for Oil Seal (Salisbury 2HA-030)	XL.46	2	
57	Screw, Set, securing Backplate to Carrier (S.A.E. Thread) (6-73-2119)	XL.47	10	
60	Nut on Setscrews (S.A.E. Thread) (6-74-11)	XL.48	10	
62	Washer, locking Nuts (6-75-GB.49)	XL.49	10	

# REAR AXLE

Part No.	Description.	Plate No.	No. per Unit.	Remarks.
C.5064	<b>*REAR AXLE HUB</b>	XL.50	2	
C.7228	<b>*BRAKE DRUM</b>	XL.51	2	
C.3078	<b>*Screw, Set, locating Brake Drums on Hubs</b>	XL.52	4	
C.3040	<b>*Stud, securing Brake Drums and Road Wheels to Hubs</b>	XL.53	10	
C.3041	<b>*Nut on Studs</b>	XL.54	10	
C.970	<b>Nipple, Grease, on Axle Tubes (Tecalemit NA.5797)</b>	XL.55	2	
	<b>NOTE.—Items marked * are for use with "Disc" Type Road Wheels only.</b>			
	<b>THE FOLLOWING ITEMS ARE REQUIRED FOR "SPECIAL EQUIPMENT" MODELS (i.e., Cars bearing the prefix "S." to the Chassis number.)</b>			
C.6022	Hub, right hand, Rear		1	
C.6023	Hub, left hand, Rear		1	
C.6277	Stud in Hubs		10	
NN.143/L	Nut on Hub Studs		10	
C.1096/1	Washer, Spring, under Nuts		10	
C.1102	Hub Cap, right hand		1	
C.1103	Hub Cap, left hand		1	
C.6025	Brake Drum, Rear		2	
C.6025	Brake Drum, Rear		2	<b>FOR USE ONLY WITH WIRE WHEELS</b> for Chassis No. 660001 and subs. 669001 and subs. 672647 and subs. 679895 and subs. 667001 and subs. 677001 and subs.
C.7273	Brake Drum, Rear		2	<b>FOR USE ONLY WITH WIRE WHEELS</b> up to Chassis No. 672646 and 679894

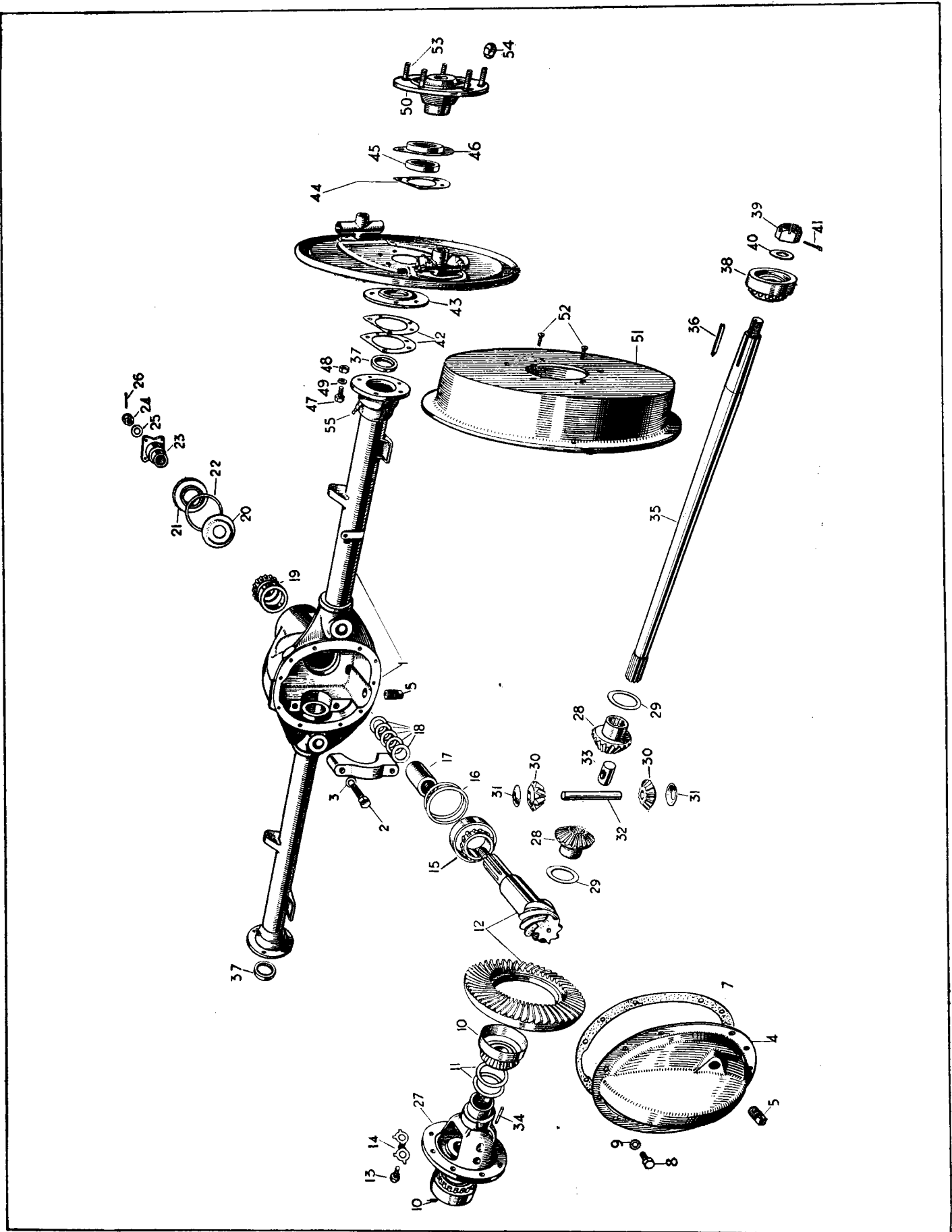


PLATE XL