

S.U. I ³/₄ CARBURETTER

Part No.	Description	Plate No.	No. per Unit	Remarks
C.5185	FRONT CARBURETTER, COMPLETE (S.U. H.6.)	H.1	1	
C.5186	REAR CARBURETTER, COMPLETE (S.U. H.6.)	H.2	1	
C.8333	Needle (S.J.)	H.3	2	FOR ALL MODELS WHEN FITTED WITH STANDARD CYLINDER HEAD. FOR FIXED HEAD COUPE WHEN FITTED WITH "C" TYPE CYLINDER HEAD AND C.8133 AIR CLEANERS. FOR OPEN AND DROP HEAD COUPE WHEN FITTED WITH "C" TYPE CYLINDER HEAD AND C.4496 AIR CLEANERS.
C.7869	Needle (SR)	H.3	2	
C.7858	Needle (WO.2.)	H.3	2	
468	Screw, locking Needle	H.4	2	
3280	Disc on Throttle Spindles	H.5	2	
1358	Screw, securing Discs	H.6	4	
3281	Spindle, Throttle, Front Carburetter	H.7	1	
4765	Spindle, Throttle, Rear Carburetter		1	
199/3	Stop on Throttle Spindles	H.8	2	
521	Screw, adjusting Throttle Stops	H.9	2	
451	Spring, locking Adjusting Screws	H.10	2	
3120/1	Lever on Throttle Spindles	H.11	2	
694	Bolt, securing Levers to Spindles		2	
156	Nut on Bolts		2	
4847	Washer, Spring, under Nuts		2	
4669/1	Body only, Front Carburetter	H.12	1	
4669/4	Body only, Rear Carburetter		1	
4490	Union, on Front Carburetter, for attachment of Vacuum Control Pipe	H.13	1	
1208	Float Chamber for Front and Rear Carburetter	H.14	2	
4761	Lid for Float Chamber	H.15	2	
1147	Gasket under Lids	H.16	2	
1867	Nut, Cap, securing Lids	H.17	2	
1148	Washer, Plain, under Cap Nuts	H.18	2	
1928	Washer (Fibre) Serrated, under Cap Nuts	H.19	2	
698	Bolt, Banjo, securing Feed Pipe to Lids	H.20	2	
141	Washer (Fibre) on Banjo Bolts	H.21	4	
1123	Float	H.22	2	
1121/1859	Needle-and-Seat, controlling Petrol Flow	H.23	2	
1980	Lever, Hinged, operating Needle	H.24	2	
1153	Pin, securing Hinged Lever to Lid	H.25	2	
139	Filter, in Lid	H.26	2	
4092/2	Suction Chamber (complete with Piston)	H.27	2	
4387	Spring, Return, for Piston	H.28	2	
3071	Washer, Thrust, at bottom of Return Spring	H.29	2	
175	Screw, securing Suction Chambers	H.30	6	
4602	Plunger, Oil Damper, complete	H.31	2	
141	Washer (Fibre) on Plunger	H.32	2	
3155/1-7	Jet and Head Unit	H.33	2	
3158	Screw, adjusting Jet and Head Units	H.34	2	
117	Ring (Brass) sealing Jet	H.35	2	
118	Ring (Cork) sealing Jet	H.36	2	
120	Washer, Gland (Cork) for Jet	H.37	2	
3307	Washer, Gland (Brass) for Jet	H.38	2	
3248	Spring, Gland, for Jet	H.39	2	
3230	Bearing, for Jet (Top half)	H.40	2	
4656	Bearing, for Jet (Bottom half)	H.41	2	
122	Washer (Copper) for Top Bearing	H.42	2	
3233	Washer (Copper) for Bottom Bearing	H.43	2	
3232	Screw, securing Jet Assembly, in Carburetter Body	H.44	2	
3160	Nut, Cap, on Bottom Bearing	H.45	2	
3159	Washer (Fibre) in Cap Nut	H.46	2	
4641	Bolt, securing Front Float Chamber and Thermostat Arm to Carburetter Body	H.47	1	
4642/1	Washer (Copper) under head of Bolt	H.48	1	
4751	Washer (Fibre) between Thermostat Arm and boss of Float Chamber	H.49	1	
130	Washer (Fibre) between boss of Float Chamber and Carburetter Body	H.50	1	
1541/3	Bolt, securing Rear Float Chamber to Carburetter		1	
4642/1	Washer (Copper) under head of Bolt		1	
130	Washer (Fibre) between Float Chamber and Body		1	

S.U. I $\frac{3}{4}$ CARBURETTER

Part No.	Description	Plate No.	No. per Unit	Remarks
C.7461	INSULATOR (FIBRE) BETWEEN CARBURETTER FLANGES AND INLET MANIFOLD	H.51	2	
C.2368	Gasket, between Carburetter Flanges and Inlet Manifold and Fibre Insulators	H.52	4	
C.4475	Gasket, between Carburetter Flanges and Air Cleaner Intake Pipe	H.53	2	
4755/1	BODY FOR THERMOSTAT UNIT ON FRONT CARBURETTER	H.54	1	
4758	ARM CONNECTING THERMOSTAT BODY TO CARBURETTER	H.55	1	
4752	Bolt, securing Arm to Thermostat Body	H.56	1	
4753	Washer (Fibre) between Arm and Thermostat Body	H.57	1	
4754	Washer (Copper) between head of Bolt and Arm	H.58	1	
4740	SOLENOID FOR THERMOSTAT UNIT	H.59	1	
4795	Cover (Bakelite) at top of Solenoid	H.60	1	
4797	Strap, clamping Solenoid to Body	H.61	1	
4790	Screw, in Clamping Strap	H.62	1	
4759	JET FOR THERMOSTAT	H.63	1	

S.U. I ³/₄ CARBURETTER

Part No.	Description	Plate No.	No. per Unit	Remarks
3134/425/8	AUXILIARY STARTING NEEDLE	H.64	1	
3127	Spring for Auxiliary Starting Needle	H.65	1	
1453	Screw , securing Needle to Thermostat Body	H.66	2	
3003	Washer , Spring, on Screws	H.67	2	
3139/1	Finger , Spring, locating Adjusting Nut on Needle	H.68	1	
4393/3	SHAFT, COUPLING FRONT AND REAR CARBURETTERS	H.69	1	
4334	Adaptor on Shaft	H.70	2	
669	Bolt , securing Adaptors to Shaft		4	
673	Nut on Bolts		4	
4612	Washer under Nuts		4	
C.6930	Lever , on Front Carburetter Spindle, adjacent to Coupling Shaft (S.U.1500/1)	H.71	1	
694	Bolt , securing Lever to Spindle		1	
156	Nut , on Bolt		1	
246	Washer , Spring, under Nut		1	
C.3597	FLEXIBLE COUPLING ON REAR CARBURETTERS (S.U.681)	H.72	1	} FITTED TO OPEN AND DROP HEAD COUPE, ALSO TO L.H. DRIVE FIXED HEAD COUPE.
1923/3	Adaptor on Flexible Coupling		2	
694	Bolt , securing Adaptors to Couplings		4	
196	Nut on Bolts		4	
4847	Washer under Nuts		4	
C.10033	FLEXIBLE COUPLING ON REAR CARBURETTER	H.73	1	} FITTED TO R.H. DRIVE FIXED HEAD COUPE.
1923/3	Adaptor on Flexible Coupling		1	
694	Bolt , securing Adaptor to Coupling		1	
196	Nut , on Bolt		1	
4847	Washer under Nut		1	
C.5606	Lever , on Rear Carburetter Spindle, adjacent to Flexible Coupling (S.U.3120/1)	H.74	1	} FITTED TO OPEN AND DROP HEAD COUPE, ALSO L.H. DRIVE FIXED HEAD COUPE
C.5606	Lever , on Rear Carburetter Spindle, and Flexible Coupling (S.U.3120/1)	H.74	2	

S.U. I ³/₄ CARBURETTER

Part No.	Description	Plate No.	No. per Unit	Remarks
C.5856	CONNECTING SHAFT BETWEEN FLEXIBLE COUPLING AND BRACKET ON SCUTTLE (S.U.4626/1)	H.75	1	
C.8871	Lever, on Connecting Shaft, for attachment of Accelerator Control Rod (S.U.1498/2)	H.76	1	} NOT REQUIRED FOR L.H. DRIVE FIXED HEAD COUPE.
694	Bolt, securing Lever to Shaft		1	
156	Nut on Bolt		1	
246	Washer, Spring, under Nut		1	
306/A	Ball Pin in Lever	H.77	1	
C.8875	OPERATING SHAFT ASSEMBLY, BETWEEN FLEXIBLE COUPLING AND MOUNTING BRACKET ON SCUTTLE	H.78	1	FITTED TO L.H. DRIVE FIXED HEAD COUPE ONLY.
C.3767	Ball-Pin, In Operating Shaft, for attachment of Accelerator Control Rod			
310	RETURN SPRING FOR CARBURETTER CONTROLS	H.79	2	
C.8015	Bracket, anchoring Return Springs	H.80	2	
C.3893	OVERFLOW PIPE FOR FRONT CARBURETTER	H.81	1	
C.3894	OVERFLOW PIPE FOR REAR CARBURETTER	H.82	1	
C.3895	Clip, securing Overflow Pipes at bottom		1	
C.3810	FEED PIPE FROM CARBURETTER TO FLEXIBLE PIPE	H.83	1	

S.U. 1 $\frac{3}{4}$ " CARBURETTER

Part No.	Description	Plate No.	No. per Unit	Remarks
C.3629	FLEXIBLE PIPE ASSEMBLY	H.84	1	
C.7440	STARTING PIPE FROM CARBURETTER TO INLET MANIFOLD	H.85	1	
C.7469	Gasket, under Starting Pipe Flange	H.86	1	
C.2581	PIPE, FROM FRONT CARBURETTER TO VACUUM UNIT ON DISTRIBUTOR	H.87	1	

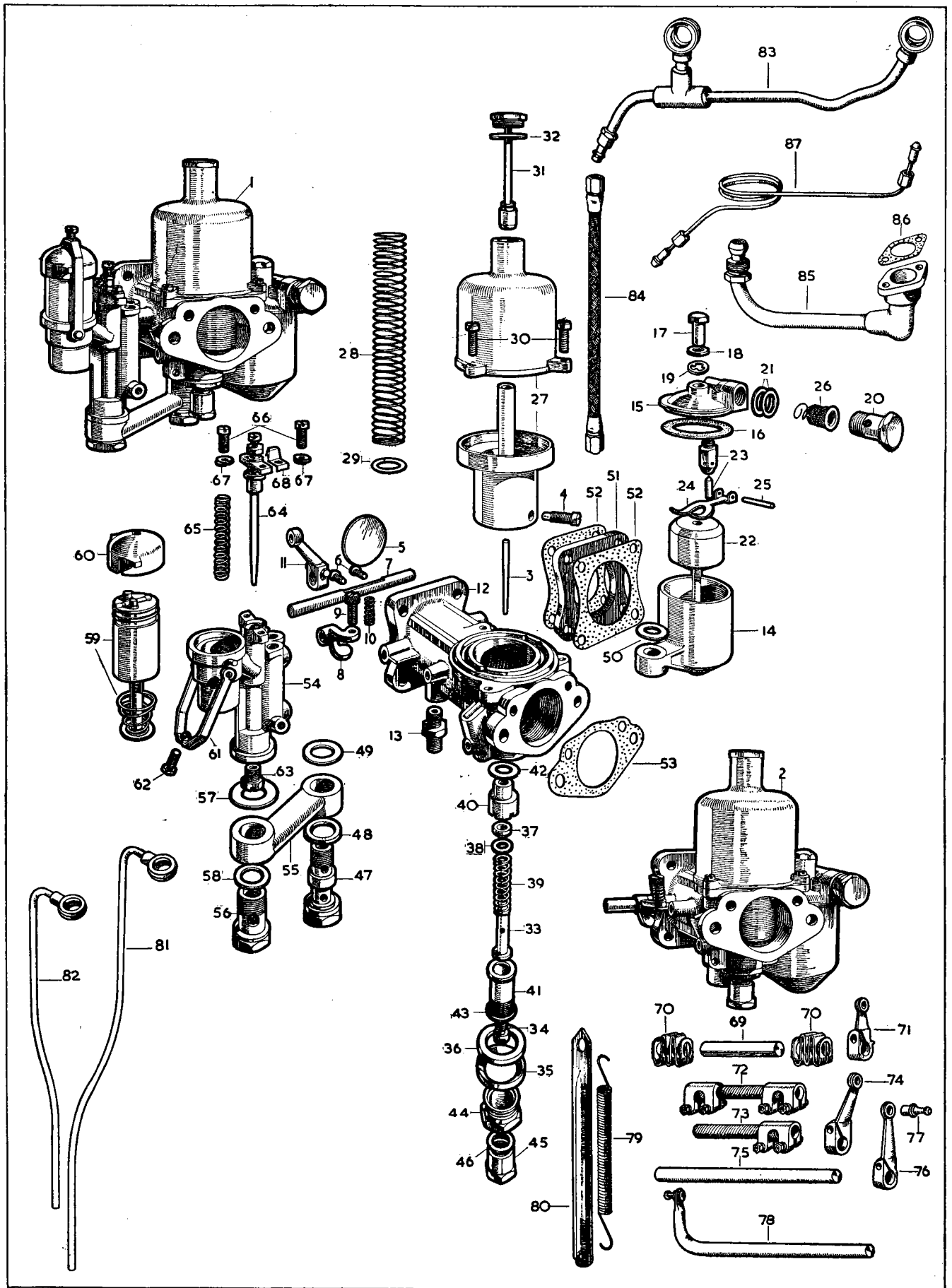


PLATE H

S.U. 2" CARBURETTER

Part No.	Description	Plate No.	No. per Unit	Remarks
NOTE: 2" CARBURETTERS ARE FOR USE WITH THE "C" TYPE CYLINDER HEAD AND ARE SUPPLIED TO SPECIAL ORDER ONLY.				
C.7096	FRONT CARBURETTER (S.U. H.8)		1	
C.10377	REAR CARBURETTER (S.U. H.8)		1	
AUC.6000	Body only for Front and Rear Carburetters		2	
AUC.8028	Suction Chamber (complete with Piston)		2	
AUC.8105	Oil Damper for centre of Piston		2	
AUC.4083	Screw , securing Suction Chamber		8	
AUC.4643	Washer , Shakeproof, on Screws		8	
C.7097	Needle (VR)		2	
AUC.2269	Screw , securing Needle in Piston		2	
AUC.5014	Spring , Return, for Piston		2	
AUC.3071	Washer , Thrust, under Return Spring		2	
AUC.4482/3	Jet and Head Unit		2	
AUC.3230	Bearing for Jet (Top half)		2	
AUC.3231	Bearing for Jet (Bottom half)		2	
AUC.2122	Washer for Top Jet Bearing		2	
AUC.3233	Washer for Bottom Jet Bearing		2	
AUC.3232	Nut , securing Jet in Carburetter Body		2	
AUC.2117	Sealing Ring (Brass) sealing Jet		2	
AUC.2118	Sealing Ring (Cork) sealing Jet		2	
AUC.2119	Gland Washer (Brass) for Jet		4	
AUC.2120	Gland Washer (Cork) for Jet		4	
AUC.1158	Gland Spring for Jet		2	
AUC.2121	Nut , adjusting Jet		2	
AUC.2114	Spring , locking Jet Adjusting Nut		2	
AUC.3234	Lever , on Front Carburetter, operating Jet		1	
AUC.4763	Lever , on Rear Carburetter, operating Jet		1	
AUC.3235	Link , on Front Carburetter, between Body and Jet Operating Lever		1	
AUC.3415	Link , on Rear Carburetter, between Body and Jet Operating Lever		1	
AUC.4667	Spring , Return, between Jet Lever and Carburetter Body		2	
AUC.2381	Pin , Clevis, securing Link to Jet Levers and Carburetter Bodies		4	
AUC.2108	Pin , Clevis, securing Jet Operating Levers to Jets		2	
L.102/4U	Pin , Split, securing Clevis Pins		6	
AUC.1178/1187	Float Chamber		2	
AUC.1182	Float		2	
AUC.1180	Lid for Float Chambers		2	
AUC.1239	Gasket , between Float Chamber and Lid		2	
AUC.1181/1888	Needle and Seat , controlling flow of Petrol to Float Chambers		2	
AUC.1183	Washer (Copper) under Seat		2	
AUC.1185	Lever , operating Needle		2	
AUC.1152	Pin , hingeing Lever on Float Chamber Lid		2	
AUC.2655	Filter in Float Chamber Lid		2	
AUC.1163	Cap Nut , securing Lid to Float Chamber		2	
AUC.2141	Washer (Fibre) on Banjo Bolts		4	
AUC.2698	Banjo Bolt , securing Feed Pipe to Float Chamber Lid		2	
AUC.1543	Banjo Bolt , securing Float Chamber to Carburetter Body		2	
AUC.1542	Washer (Cork) in recess of bottom of Banjo Bolt		2	
AUC.2560	Washer (Fibre) between boss of Float Chamber arm and Carburetter Body		2	
AUC.4984	Support Arm between Float Chamber and Carburetter Body		2	
AUC.4990	Screw , Set, securing Support Arm to Carburetter Body		2	
C.724	Washer , Shakeproof, on Setscrews		2	
AUC.4891	Spindle , Throttle, through Carburetters		2	
AUC.4890	Disc on Throttle Spindles		2	
AUC.1358	Screw , securing Discs to Spindles		4	
AUC.2198	Throttle Stop on Spindles		2	
AUC.2521	Screw , adjusting Throttle Stop		2	
AUC.2451	Spring , locking Adjusting Screw		2	

S.U. 2" CARBURETTER

Part No.	Description	Plate No.	No. per Unit	Remarks
CARBURETTER ASSEMBLY (continued)				
AUC.2106	Taper Pin , securing Throttle Stop to Spindle		2	
C.6930	Lever on Front Carburetter Spindle		1	
C.5606	Lever on Rear Carburetter Spindle adjacent to Throttle Stop		1	
AUC.2694	Bolt , securing Levers to Spindles		2	
AUC.2156	Nut on Bolts		2	
AUC.2246	Washer , Spring, under Nuts		2	

LINKAGE BETWEEN FRONT AND REAR CARBURETTERS

AUC.2402	Shaft , between Front and Rear Carburetters		1	
AUC.4334	Coupling , on Shaft and Carburetter Spindles		2	
AUC.2672	Bolt , securing Couplings to Throttle Spindles and Shaft		4	
AUC.2673	Nut on Bolts		4	
AUC.4612	Washer , Spring, under Nuts		4	
C.10702	Fork End at bottom of Front Carburetter Jet Lever (AUC.1061)		1	
C.10701	Fork End at bottom of Rear Carburetter Jet Lever (AUC.2256)		1	
AUC.2108	Pin , Clevis, securing Fork Ends to Jet Levers		2	
L.102/4U	Pin , Split, securing Clevis Pins		2	
C.10700	Rod , connecting Fork Ends between Carburetters (AUC.1853)		1	
AN.102/L	Nut , locking, Connecting Rod to Fork Ends		2	

OUTRIGGER DETAILS FOR CARBURETTERS

AUC.2681	Coupling Shaft (Flexible) linking Rear Carburetter with Outrigger Shaft		1	
AUC.1925	Adaptor , securing Coupling Shaft to Rear Carburetter Spindle and Outrigger Shaft		2	
AUC.2694	Bolt , securing Adaptors		4	
AUC.2156	Nut on Bolts		4	
AUC.2246	Washer , Spring, under Nuts		4	
AUC.4852	Outrigger Shaft , linking Coupling Shaft with Accelerator Controls		1	
AUC.3121	Lever on Outrigger Shaft		1	
AUC.2694	Bolt , securing Lever		1	
AUC.2156	Nut on Bolt		1	
AUC.2246	Washer , Spring, under Nuts		1	

S.U. 2" CARBURETTER

Part No.	Description	Plate No.	No. per Unit	Remarks
C.8486	INSULATOR (FIBRE) BETWEEN CAR- BURETTER FLANGES AND INLET MANIFOLD		4	
C.7221	Gasket, between Carburetter Flanges, Inlet Manifold and Fibre Insulators		6	
C.7164	Gasket, between Carburetter Flanges and Air Cleaner Intake Pipe		2	
C.8579/2	CHOKE CONTROL		1	
C.8599	Washer, Special, on Facia behind Choke Control Knob		1	
NN.237/L	Nut, securing Choke Control behind Facia		1	
C.726	Washer, Shakeproof, under Nut		1	
C.262	Swivel in Jet Operating Lever on Front Carburetter		1	
L.102/4U	Pin, Split, retaining Swivel		1	
C.263	Nipple (Solderless) on Choke Control		2	
C.2850	Grommet, in Scuttle, for Choke Control Cable		1	
C.1071/2	Clip, securing Choke Control		1	R.H. DRIVE CARS ONLY.
C.1040/13	Clip, securing Choke Control		1	L.H. DRIVE CARS ONLY.
310	RETURN SPRING FOR CARBURETTER CONTROLS		1	
C.7289	FEED PIPE FROM CARBURETTER TO FLEXIBLE PIPE		1	
C.6507	FLEXIBLE PIPE ASSEMBLY		1	

AIR CLEANER

Part No.	Description	Plate No.	No. per Unit	Remarks
C.8133	AIR CLEANER ASSEMBLY (A.C. DELCO 7222695)	J.1	1	NOTE: ALL ITEMS ON THIS PAGE ARE FOR USE ONLY WITH THE STANDARD TYPE CYLINDER HEAD.
C.8139	AIR INTAKE PIPE FOR AIR CLEANER	J.2	1	
C.4475	Gasket, between Intake Pipe and Carburetter Flanges	J.3	2	
OD.105/4J	Dowel, positioning Intake Pipe on Carburetter Flanges	J.4	2	
CS.131/8D	Screw, Set, securing Intake Pipe to Carburetter Flanges	J.5	2	
C.725	Washer, Shakeproof, on Setscrews	J.6	2	
C.1788	SEAL, CONNECTING AIR CLEANER TO INTAKE PIPE	J.7	1	
C.8140	BRACKET, SUPPORTING AIR CLEANER AT REAR	J.8	1	
NS.131/5D	Screw, Set, securing Bracket to Air Cleaner	J.9	2	
CS.131/5D	Screw, Set, securing Bracket to rear end of Intake Pipe	J.10	1	
C.725	Washer, Shakeproof, on Setscrews	J.11	3	
C.8134	BRACKET, SUPPORTING AIR CLEANER AT FRONT	J.12	1	
C.8135	BRACKET, SUPPORTING AIR CLEANER AT FRONT	J.13	1	
C.8136	Washer, Spacing, on Stud on Air Cleaner, behind Brackets	J.14	1	
FW.105/T	Washer, Plain, behind Brackets	J.15	1	
NN.131/L	Nut, securing Brackets to Inlet Manifold and Air Cleaner	J.16	3	
C.725	Washer, Shakeproof, under Nuts	J.17	3	

AIR CLEANER

Part No.	Description	Plate No.	No. per Unit	Remarks
C.4496	AIR CLEANER (A.C. DELCO 1579565)	J.18	2	} FOR USE ONLY ON OPEN AND DROP HEAD COUPE WHEN FITTED WITH "C" TYPE CYLINDER HEAD AND 1$\frac{3}{4}$" CARBURETTERS.
C.4475	Gasket, between Air Cleaners and flange of Carburetters	J.3	2	
C.8484	AIR CLEANER (A.C. DELCO 1572943)		2	} FOR USE ON ALL MODELS FITTED WITH "C" TYPE CYLINDER HEAD AND 2" CARBURETTERS.
C.7164	Gasket, between Air Cleaners and flange of Carburetters		2	
FS.105/6D	Screw, Set, securing Air Cleaners to Carburetters		4	
FG.105/X	Washer, Spring, on Setscrews		4	

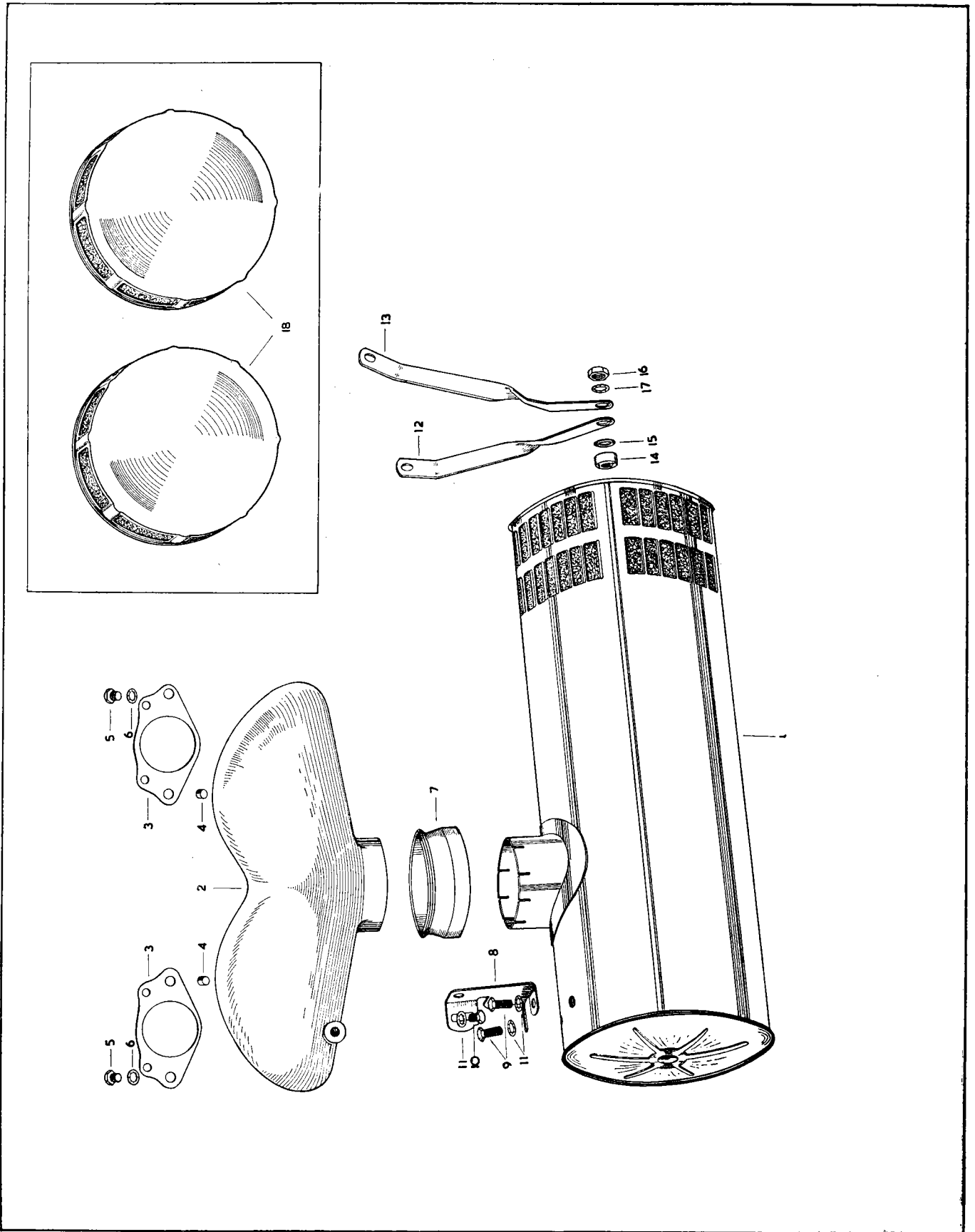


PLATE J

ACCELERATOR CONTROLS

FOR OPEN & DROP HEAD COUPE MODELS
(R.H. DRIVE ONLY)

Part No.	Description	Plate No.	No. per Unit	Remarks
C.7959	ACCELERATOR PEDAL ASSEMBLY	K.1	1	NOTE : ITEMS ON PAGES 35 AND 36 ARE FITTED TO R.H. DRIVE CARS ONLY.
C.3473	Pad (Rubber) on Accelerator Pedal	K.2	1	
C.3479	Washer (Felt) at each side of Boss on Accelerator Pedal	K.3	2	
C.7961	BRACKET, ON FLOOR, MOUNTING ACCELERATOR PEDAL	K.4	1	
NS.125/4D	Screw, Set, securing Mounting Bracket to Floor	K.5	4	
C.724	Washer, Shakeproof, on Setscrews	K.6	4	
C.3468	Pin, Fulcrum, securing Accelerator Pedal in Mounting Bracket	K.7	1	
C.3968/1	Nut on Fulcrum Pin	K.8	1	
FW.104/T	Washer, Plain, under Nut	K.9	1	
C.7971	CONTROL ROD, LINKING ACCELERATOR PEDAL WITH INTERMEDIATE LEVER	K.10	1	
C.7972	INTERMEDIATE LEVER ON SCUTTLE	K.11	1	
1861	Washer, Special, at each side of Scuttle, for mounting of Intermediate Lever	K.12	2	
C.7977	Shaft, mounting Intermediate Lever to Scuttle	K.13	1	
NN.125/L	Nut on Shaft	K.14	1	
C.724	Washer, Shakeproof, under Nut	K.15	1	
C.5132	Stop Peg, in Scuttle, restricting Intermediate Lever	K.16	1	
NN.119/L	Nut, securing Stop Peg to Scuttle	K.17	1	
C.723/A	Washer, Shakeproof, under Nut	K.18	1	
C.6462	CONTROL ROD, LINKING INTERMEDIATE LEVER WITH LEVER ON THROTTLE SPINDLE	K.19	1	

ACCELERATOR CONTROLS FOR OPEN & DROP HEAD COUPE MODELS (R.H. DRIVE ONLY)

Part No.	Description	Plate No.	No. per Unit	Remarks
C.7987	BRACKET, ON SCUTTLE, CARRYING THROTTLE SPINDLE SUPPORT	K.20	1	
NS.125/4D	Screw, Set, securing Bracket to Scuttle	K.21	2	
FW.104/T	Washer, Plain, on Setscrews	K.22	2	
C.724	Washer, Shakeproof, on Setscrews	K.23	2	
C.8013	THROTTLE SPINDLE SUPPORT ASSEMBLY		1	
C.8014	Bracket only for Throttle Spindle Support	K.24	1	
C.8016	Grommet in Bracket	K.25	1	
C.3477	Bush (Graphite Impregnated) in Grommet	K.26	1	
NS.125/6D	Screw, Set, securing Throttle Spindle Support to Bracket on Scuttle	K.27	2	
FW.104/T	Washer, Plain, on Setscrews	K.28	4	
NN.125/L	Nut, on Setscrews	K.29	2	
C.724	Washer, Shakeproof, under Nuts	K.30	2	

ACCELERATOR CONTROLS

FOR OPEN & DROP HEAD COUPE MODELS
(L.H. DRIVE ONLY)

Part No.	Description	Plate No.	No. per Unit	Remarks
C.8177	ACCELERATOR PEDAL ASSEMBLY	K.31	1	NOTE : ITEMS ON PAGES 37 AND 38 ARE FITTED TO L.H. DRIVE CARS ONLY.
C.3473	Pad (Rubber) on Accelerator Pedal	K.32	1	
C.3479	Washer (Felt) at each side of Boss on Accelerator Pedal	K.33	2	
C.7961	BRACKET, ON FLOOR, MOUNTING ACCELERATOR PEDAL	K.34	1	
NS.125/4D	Screw, Set, securing Mounting Bracket to Floor	K.35	4	
C.724	Washer, Shakeproof, on Setscrews	K.36	4	
C.3468	Pin, Fulcrum, securing Accelerator Pedal in Mounting Bracket	K.37	1	
C.3968/1	Nut on Fulcrum Pin	K.38	1	
FW.104/T	Washer, Plain, under Nut	K.39	1	
C.7970	CONTROL ROD, LINKING ACCELERATOR PEDAL WITH INTERMEDIATE LEVER	K.40	1	
C.7979	BRACKET, ON SCUTTLE, FOR MOUNTING OF INTERMEDIATE LEVER	K.41	1	
NS.125/4D	Screw, Set, securing Intermediate Lever Bracket to Scuttle	K.42	2	
FW.104/T	Washer, Plain, on Setscrews	K.43	2	
C.724	Washer, Shakeproof, on Setscrews	K.44	2	
C.5132	Stop Peg on Scuttle Bracket	K.45	1	
NN.119/L	Nut, securing Stop Peg to Bracket	K.46	1	
C.723/A	Washer, Shakeproof, under Nut	K.47	1	
C.7973	INTERMEDIATE LEVER ON SCUTTLE	K.48	1	
C.7977	Shaft, mounting Intermediate Lever to Bracket on Scuttle	K.49	1*	
FW.104/T	Washer, Plain, on Shaft	K.50	1	
NN.125/L	Nut on Shaft	K.51	1	
C.724	Washer, Shakeproof, under Nut	K.52	1	

ACCELERATOR CONTROLS FOR OPEN & DROP HEAD COUPE MODELS (L.H. DRIVE ONLY)

Part No.	Description	Plate No.	No. per Unit	Remarks
C.3765	CONTROL ROD, LINKING INTER-MEDIATE LEVER WITH LEVER ON THROTTLE SPINDLE	K.53	1	
C.7987	BRACKET, ON SCUTTLE, CARRYING THROTTLE SPINDLE SUPPORT	K.54	1	
NS.125/4D FW.104/T C.724	Screw, Set, securing Bracket to Scuttle Washer, Plain, on Setscrews Washer, Shakeproof, on Setscrews	K.55 K.56 K.57	2 2 2	
C.8013	THROTTLE SPINDLE SUPPORT ASSEMBLY		1	
C.8014 C.8016 C.3477	Bracket only for Throttle Spindle Support Grommet in Bracket Bush (Graphite Impregnated) in Grommet	K.58 K.59 K.60	1 1 1	
NS.125/6D FW.104/T NN.125/L C.724	Screw, Set, securing Throttle Spindle Support Washer, Plain, on Setscrews Nut, on Setscrews Washer, Shakeproof, under Nuts	K.61 K.62 K.63 K.64	2 4 2 2	

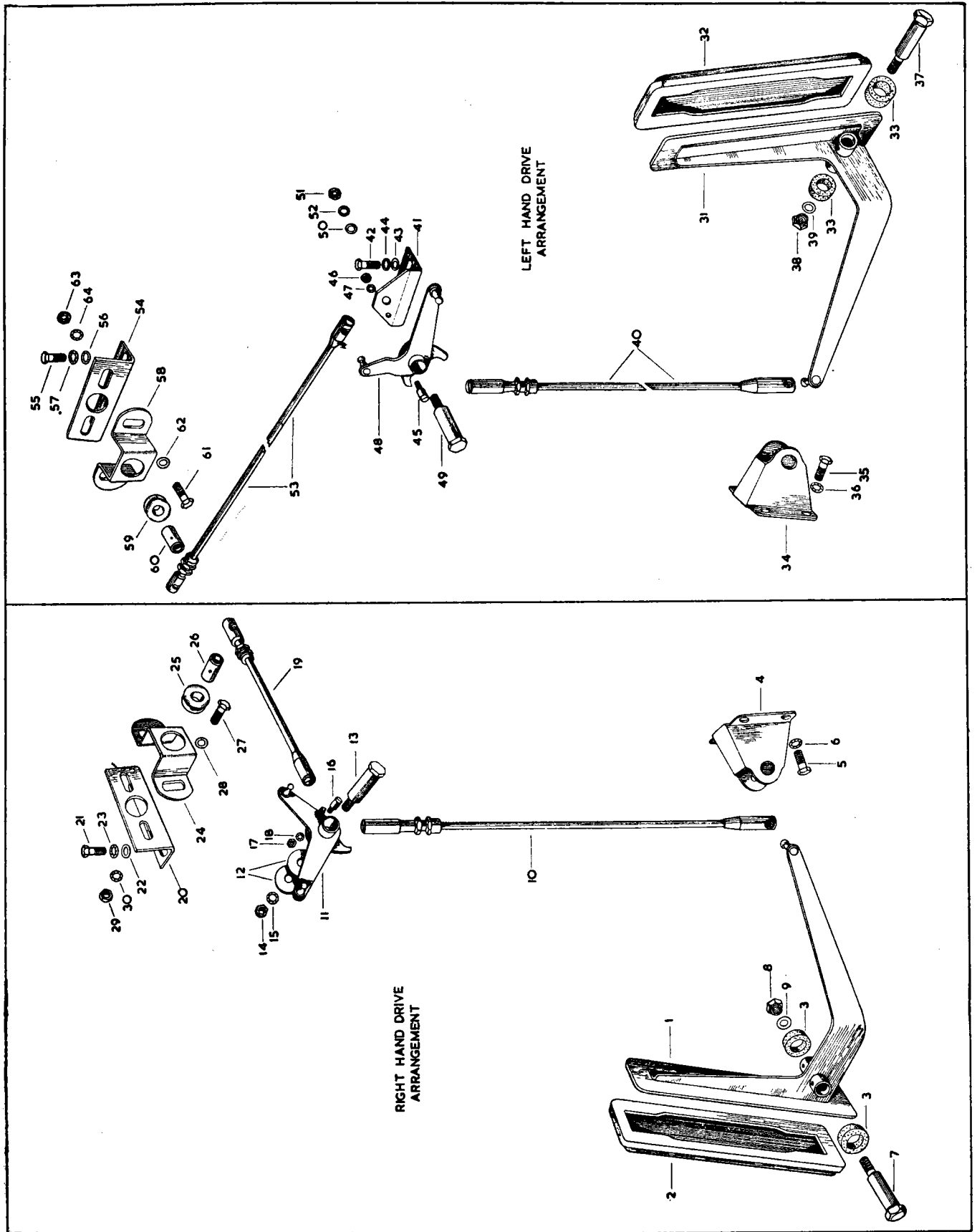


PLATE K

ACCELERATOR CONTROLS

FOR FIXED HEAD COUPE
(L.H. DRIVE ONLY)

Part No.	Description	Plate No.	No. per Unit	Remarks
C.4956	ACCELERATOR PEDAL ASSEMBLY	L.1	1	NOTE : ITEMS ON PAGES 39 AND 41 ARE FITTED TO L.H. DRIVE CARS ONLY.
C.3473	Pad (Rubber) on Accelerator Pedal	L.2	1	
C.9937	BRACKET, ON FLOOR, MOUNTING ACCELERATOR PEDAL	L.3		
C.5824/1 C.724	Screw, Set, securing Mounting Bracket to Floor Washer, Shakeproof, on Setscrews	L.4 L.5	3 3	
C.6969	Pin, Fulcrum, securing Accelerator Pedal in Mounting Bracket	L.6	1	
C.3968/1 FW.104/T	Nut on Fulcrum Pin Washer, Plain, under Nut	L.7 L.8	1 1	
C.5828	BRACKET, ON UNDERSIDE OF TOE-BOARD, FOR MOUNTING OF FULCRUM LEVER	L.9	1	
C.5824/2 FW.104/T C.724	Screw, Set, securing Bracket Washer, Plain, on Setscrews Washer, Shakeproof, on Setscrews	L.10 L.11 L.12	4 4 4	
C.10345	FULCRUM LEVER ASSEMBLY FOR CONNECTION OF CONTROL RODS BETWEEN PEDAL AND INTERMEDIATE LEVER	L.13	1	
C.6969 C.3968/1 FW.104/T	Pin, Pivot, securing Fulcrum Lever in Bracket Nut, securing Pivot Pin in Bracket Washer, Plain, under Nut	L.14 L.15 L.16	1 1 1	
C.9939	PUSH ROD, LINKING ACCELERATOR PEDAL WITH FULCRUM LEVER	L.17	1	
C.4989	Gaiter (Rubber) on Push Rod	L.18	1	

ACCELERATOR CONTROLS FOR FIXED HEAD COUPE (L.H. DRIVE ONLY)

Part No.	Description	Plate No.	No. per Unit	Remarks
C.8854	INTERMEDIATE SHAFT ASSEMBLY ON SCUTTLE		1	
C.10157	Shaft only	L.19	1	
C.8860	Bracket, on Scuttle, supporting Intermediate Shaft	L.20	1	
C.8856	Lever Assembly at front of Intermediate Shaft	L.21	1	
BD.1708/1	Washer, Spring (Double Coil) behind front Lever	L.22	1	
C.8858	Lever Assembly at rear of Intermediate Shaft	L.23	1	
FW.105/T	Washer, Plain, behind rear Lever	L.24	1	
NS.125/4D	Screw, Set, securing Intermediate Shaft Assembly to Scuttle		2	
FW.104/T	Washer, Plain, on Setscrews		2	
C.724	Washer, Shakeproof, on Setscrews		2	
C.8856	LEVER ASSEMBLY AT FRONT OF INTERMEDIATE SHAFT	L.21	1	
C.8857	Lever only (complete with Bolt and Nut) (SU.1942)		1	
306/A	Ball Pin in Lever		1	
C.8858	LEVER ASSEMBLY AT REAR OF INTERMEDIATE SHAFT	L.23	1	
C.5606	Lever only (complete with Bolt and Nut) (SU.3120/1)		1	
306/A	Ball Pin in Lever		1	
C.8861	Stop Peg, in Scuttle, restricting Intermediate Shaft	L.25	1	
AW.102/T	Washer, Plain, on Stop Peg	L.26	2	
NN.119/L	Nut, on Stop Peg	L.27	1	
C.723/A	Washer, Shakeproof, under Nut	L.28	1	
C.9951	CONTROL ROD, LINKING FULCRUM LEVER WITH INTERMEDIATE SHAFT	L.29	1	

ACCELERATOR CONTROLS

FOR FIXED HEAD COUPE
(L.H. DRIVE ONLY)

Part No.	Description	Plate No.	No. per Unit	Remarks
C.8853	CONTROL ROD, LINKING INTER-MEDIATE SHAFT WITH LEVER ON THROTTLE SPINDLE	L.30	1	
C.8862	BRACKET, ON SCUTTLE, CARRYING THROTTLE SPINDLE SUPPORT	L.31	1	
NS.125/4D	Screw, Set, securing Bracket to Scuttle	L.32	2	
FW.104/T	Washer, Plain, on Setscrews	L.33	2	
C.724	Washer, Shakeproof, on Setscrews	L.34	2	
C.8863	THROTTLE SPINDLE SUPPORT ASSEMBLY		1	
C.8864	Bracket only for Throttle Spindle Support	L.35	1	
C.8016	Grommet in Bracket	L.36	1	
C.3477	Bush (Graphite Impregnated) in Grommet	L.37	1	
NS.125/6D	Screw, Set, securing Throttle Spindle Support to Bracket on Scuttle	L.38	2	
FW.104/T	Washer, Plain, on Setscrews	L.39	4	
NN.125/L	Nut on Setscrews	L.40	2	
C.724	Washer, Shakeproof, under Nuts	L.41	2	

ACCELERATOR CONTROLS

FOR FIXED HEAD COUPE
(R.H. DRIVE ONLY)

Part No.	Description	Plate No.	No. per Unit	Remarks
C.4956	ACCELERATOR PEDAL ASSEMBLY	L.42	1	NOTE : ITEMS ON PAGES 42 AND 43 ARE FITTED TO R.H. DRIVE CARS ONLY.
C.3473	Pad (Rubber) on Accelerator Pedal	L.43	1	
C.9937	BRACKET, ON FLOOR, MOUNTING ACCELERATOR PEDAL	L.44	1	
C.5824/1 C.724	Screw, Set, securing Mounting Bracket to Floor Washer, Shakeproof, on Setscrews	L.45 L.46	3 3	
C.6969	Pin, Fulcrum, securing Accelerator Pedal in Mounting Bracket	L.47	1	
C.3968/1 FW.104/T	Nut on Fulcrum Pin Washer, Plain, under Nut	L.48 L.49	1 1	
C.5828	BRACKET, ON UNDERSIDE OF TOE-BOARD, FOR MOUNTING OF FULCRUM LEVER	L.50	1	
C.5824/2 FW.104/T C.724	Screw, Set, securing Bracket Washer, Plain, on Setscrews Washer, Shakeproof, on Setscrews	L.51 L.52 L.53	4 4 4	
C.9935	FULCRUM LEVER ASSEMBLY FOR CONNECTION OF CONTROL RODS BETWEEN PEDAL AND INTERMEDIATE LEVER	L.54	1	
C.6969	Pin, Pivot, securing Fulcrum Lever in Bracket	L.55	1	
C.3968/1 FW.104/T	Nut, securing Pivot Pin in Bracket Washer, Plain, under Nut	L.56 L.57	1 1	
C.9939	PUSH ROD, LINKING ACCELERATOR PEDAL WITH FULCRUM LEVER	L.58	1	
C.4989	Gaiter (Rubber) on Push Rod	L.59	1	

ACCELERATOR CONTROLS FOR FIXED HEAD COUPE (R.H. DRIVE ONLY)

Part No.	Description	Plate No.	No. per Unit	Remarks
C.10063	INTERMEDIATE LEVER ASSEMBLY	L.60	1	
1861	Washer, Special, at each side of Scuttle, for mounting of Intermediate Lever	L.61	2	
C.7977	Shaft, mounting Intermediate Lever to Scuttle	L.62	1	
NN.125/L	Nut on Shaft	L.63	1	
C.724	Washer, Shakeproof, under Nut	L.64	1	
C.5132	Stop Peg, in Scuttle, restricting Intermediate Lever	L.65	1	
NN.119/L	Nut, securing Stop Peg to Scuttle	L.66	1	
C.723/A	Washer, Shakeproof, under Nut	L.67	1	
C.9135	CONTROL ROD, LINKING INTERMEDIATE LEVER WITH FULCRUM LEVER	L.68	1	
C.6462	CONTROL ROD, LINKING INTERMEDIATE LEVER WITH LEVER ON THROTTLE SPINDLE	L.69	1	
C.9952	BRACKET, ON SCUTTLE, CARRYING THROTTLE SPINDLE SUPPORT	L.70	1	
NS.125/4D	Screw, Set, securing Bracket to Scuttle	L.71	2	
FW.104/T	Washer, Plain, on Setscrews	L.72	2	
C.724	Washer, Shakeproof, on Setscrews	L.73	2	
C.8851	THROTTLE SPINDLE SUPPORT ASSEMBLY		1	
C.8852	Bracket only, for Throttle Spindle	L.74	1	
C.8016	Grommet, in Bracket	L.75	1	
C.3477	Bush (Graphite Impregnated) in Grommet	L.76	1	
NS.125/6D	Screw, Set, securing Throttle Spindle Support to Bracket on Scuttle	L.77	2	
FW.104/T	Washer, Plain, on Setscrews	L.78	4	
NN.125/L	Nut on Setscrews	L.79	2	
C.724	Washer, Shakeproof, under Nuts	L.80	2	

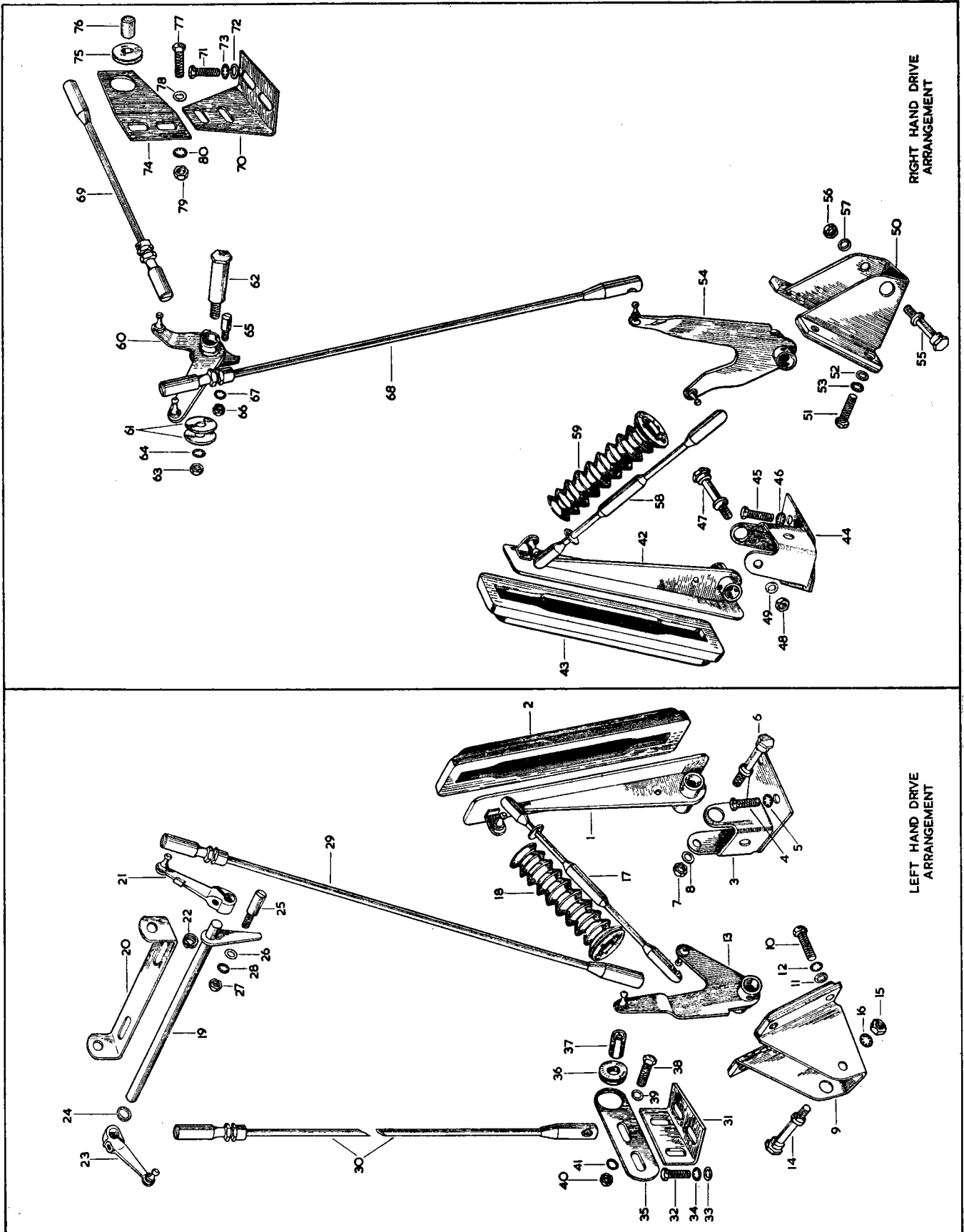


PLATE L

FUEL AND EXHAUST SYSTEMS

Part No.	Description	Plate No.	No. per Unit	Remarks
C.8352	FUEL TANK ASSEMBLY	AF.1	1	
C.990/1 C.1617	Filter Assembly at bottom of Fuel Tank Washer , on Filter	AF.2 AF.3	1 1	
C.8368	STUD, SECURING FUEL TANK TO TIE TUBE ON CHASSIS FRAME REAR EXTENSION	AF.4	2	
C.741	Washer , Shakeproof, at top of Studs	AF.5	2	
C.8370	Pad (Rubber) at bottom of Studs	AF.6	2	
C.8374	Washer , Special, at each side of mounting Brackets on Fuel Tank	AF.7	4	
NN.131/L	Nut , securing Fuel Tank	AF.8	2	
NN.231/L	Locknut on Studs	AF.9	2	
C.8369	BOLT, SECURING FUEL TANK TO TUBULAR CROSS MEMBER ON CHASSIS FRAME REAR EXTENSION	AF.10	2	
C.8370	Pad (Rubber) on Bolts	AF.11	2	
C.8374	Washer , Special, under Nuts	AF.12	2	
NN.131/L	Nut on Bolts	AF.13	2	
NN.231/L	Locknut on Bolts	AF.14	2	
C.8371	Felt , 9" x 2" x $\frac{1}{8}$ ", for Fuel Tank seating		1	
C.8372	Felt , 7" x 2" x $\frac{1}{8}$ ", for Fuel Tank Seating		1	
C.8373	Felt , 18" x 2" x $\frac{1}{8}$ ", for Fuel Tank Seating		2	
C.8414	Felt , 44" x 1" x $\frac{1}{8}$ ", for Fuel Tank Seating		1	
C.7555	FUEL PIPE (REAR) FROM TANK TO CENTRE PIPE	AF.15	1	
C.1040/12	Clip , securing Rear Fuel Pipe to Damper Bracket on Chassis Frame	AF.16	1	
NS.125/4D	Screw , Set, securing Clip		1	
NN.125/L	Nut on Setscrew		1	
C.724	Washer , Shakeproof, under Nut		1	

FUEL AND EXHAUST SYSTEMS

Part No.	Description	Plate No.	No. per Unit	Remarks
C.7556	FUEL PIPE (CENTRE) FROM REAR PIPE TO INLET CONNECTION ON FUEL PUMP	AF.17	1	
C.7557	FUEL PIPE (FRONT) FROM OUTLET CONNECTION ON FUEL PUMP TO FLEXIBLE HOSE	AF.18	1	
C.3727	Clip, securing Fuel Pipes to Chassis Frame Side Member Sealing Ring (Rubber) at Joint of Fuel Pipes to Inlet and Outlet connections on Fuel Pump	AF.19	5	
C.11196		AF.20	2	
C.2823	FUEL PUMP (PP.31/LCS)	AF.21	1	Fitted from Chassis No. : 800001 to 800031. 810001 to 811421. 804001 to 804139. 814001 to 814239. 807001 to 807125. 817001 to 817457.
C.9688	FUEL PUMP (4644/I—AUA.57)		1	Fitted to Chassis No. : 800032 and subs. 811422 and subs. 804140 and subs. 814240 and subs. 807126 and subs. 817458 and subs.
C.2839	Cover for Fuel Pump Terminal	AF.22	1	
C.974	Grommet for Fuel Pump mounting	AF.23	2	
C.800	Stud for mounting of Fuel Pump	AF.24	2	
C.2539/1	Nut on Studs	AF.25	2	
BD.541/5	Washer under Nuts	AF.26	2	

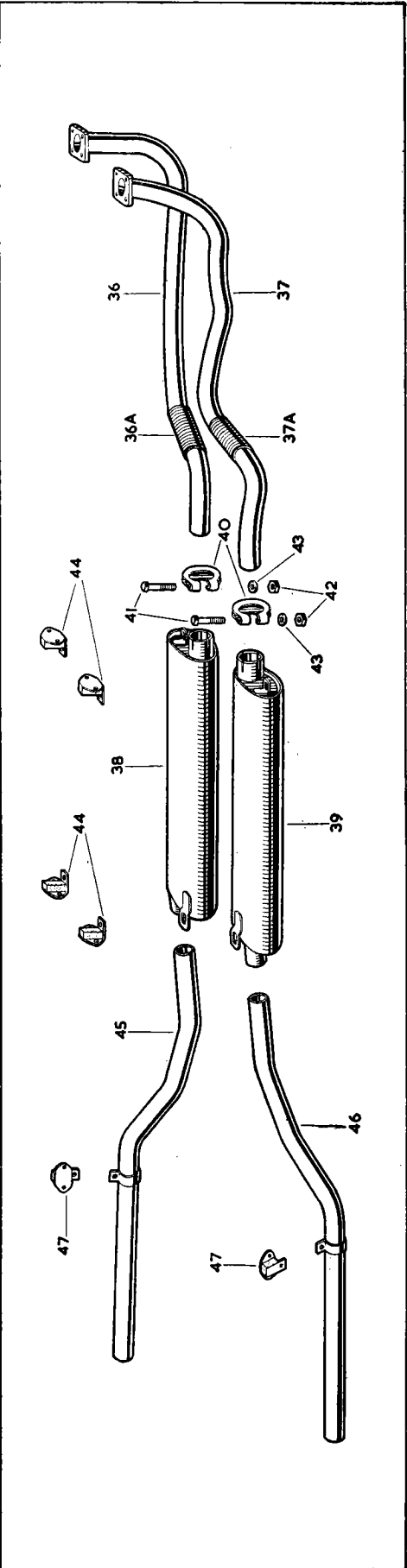
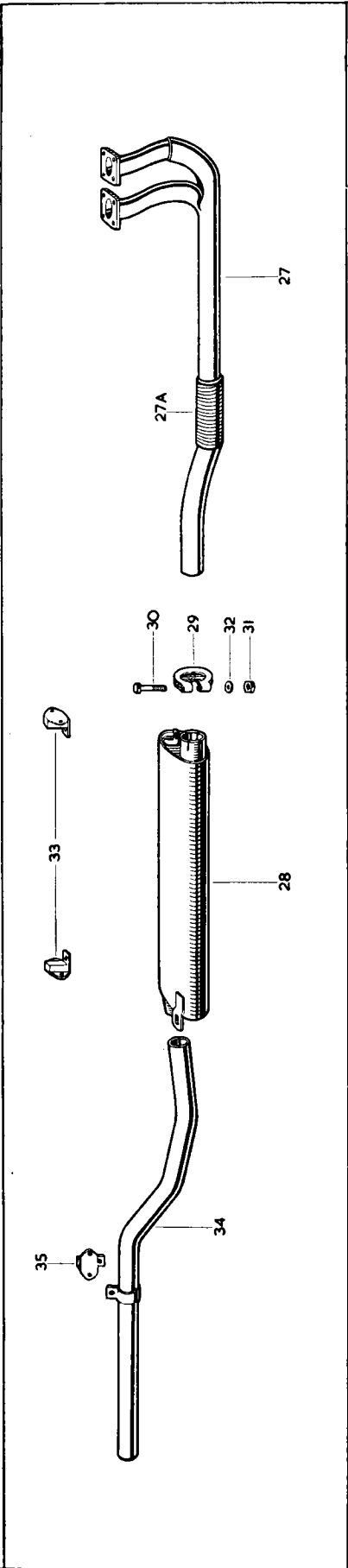
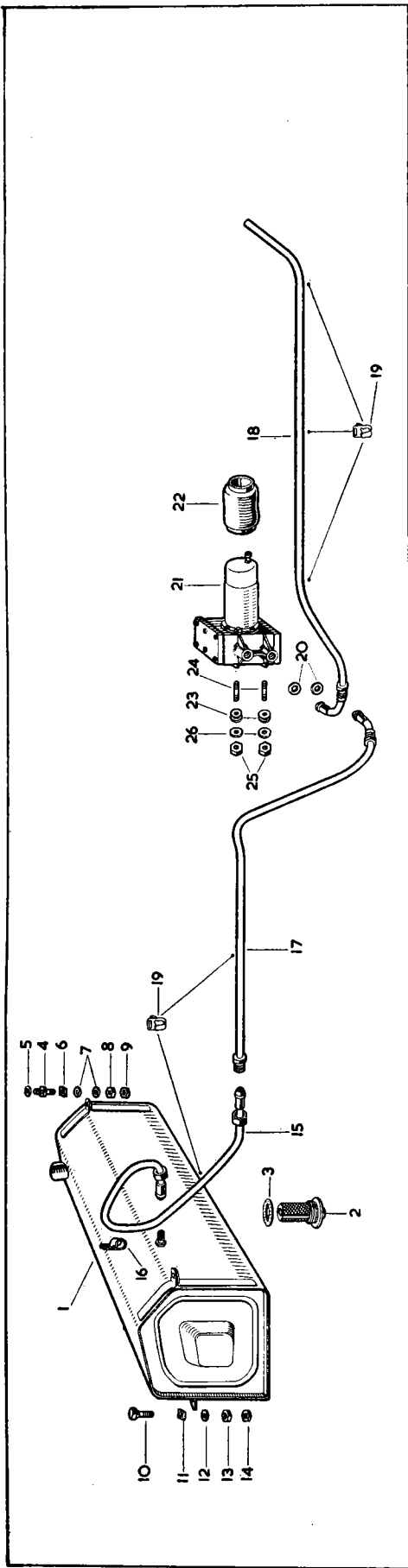


PLATE AF