

# FRONT SUSPENSION

Part No.	Description	Plate No.	No. per Unit	Remarks
C.7520	<b>R.H. FRONT SUSPENSION ASSEMBLY</b>		1	} <b>REQUIRED WHEN DISC ROAD WHEELS ARE FITTED.</b>
C.7521	<b>L.H. FRONT SUSPENSION ASSEMBLY</b>		1	
C.7603	<b>R.H. FRONT SUSPENSION ASSEMBLY</b>		1	} <b>REQUIRED WHEN WIRE SPOKE ROAD WHEELS ARE FITTED.</b>
C.7604	<b>L.H. FRONT SUSPENSION ASSEMBLY</b>		1	
C.8123	Shaft, supporting Upper Wishbone Levers	V.1	2	
C.4739	Wishbone Lever, Upper Front	V.2	2	
C.4733	Wishbone Lever, Upper Rear	V.3	2	
C.3003	Bush (Metalastik) at each side of "eye" in Wishbone Levers	V.4	8	
C.3010/1	Nut, securing Upper Wishbone Levers to Shafts	V.5	4	
C.3193	Washer, Special, under Nuts	V.6	4	
L.104/10U	Pin, Split, securing Slotted Nuts	V.7	4	
C.7378	Ball Joint Assembly between Upper Wishbone Levers and Stub Axle Carriers	V.8	2	
C.3362/1	Nipple, Grease, on Upper Ball Joints	V.9	2	
C.3020	Seal, between Housing of Upper Ball Joints and Stub Axle Carriers	V.10	2	
C.3169	Shim, between Upper Ball Joint and Wishbone Levers, for Wheel Castor Adjustment	V.11	As req'd	
NB.137/27D	Bolt, securing Upper Ball Joints and Wishbone Levers	V.12	4	
C.3007	Lock-Plate, on Bolts	V.13	4	
NN.137/L	Nut on Bolts	V.14	4	
NN.750/L	Nut, securing Upper Ball Joints to Stub Axle Carrier	V.15	2	
FW.108/T	Washer, Plain, under Nuts	V.16	2	
L.104/10U	Pin, Split, securing Nuts	V.17	2	
C.3009	Carrier for R.H. Stub Axle	V.18	1	
C.3606	Carrier for L.H. Stub Axle	V.18	1	
C.8467	Steering Arm, R.H.	V.19	1	
C.8468	Steering Arm, L.H.	V.19	1	
NB.143/25D	Bolt, securing Steering Arms and Brake Assemblies to Stub Axle Carrier	V.20	4	
C.3625	Nut, on Bolts	V.21	4	
C.3004/4	Washer, under Nuts	V.22	4	
L.103/7U	Pin, Split, securing Nuts	V.23	4	
C.3008	Shaft, Stub Axle	W.1	2	
C.615	Grease Retainer (Felt) on Stub Axle Shafts	W.2	2	
C.614	Plate, Cover, for Grease Retainers	W.3	2	
C.3011	Bearing, Inner, for Hub (Timken 14138/14276)	W.4	2	
C.3012	Bearing, Outer, for Hub (Timken 09067/09165)	W.5	2	
C.3037	Hub, Front (complete with Stud)	W.6	2	
C.3040	Stud, for Front Hubs	W.7	10	} <b>REQUIRED WHEN DISC ROAD WHEELS ARE FITTED.</b>
C.3039	Cap for Front Hubs	W.8	2	
C.3044/1	Nipple, Grease, in Front Hubs (Tec. NA.6656)	W.9	2	
C.6020	Hub, R.H. Front	W.10	1	
C.6021	Hub, L.H. Front	W.10	1	
C.6277	Stud for Front Hubs	W.11	10	} <b>REQUIRED WHEN WIRE SPOKE ROAD WHEELS ARE FITTED.</b>
C.1102	Cap for R.H. Front Hub	W.12	1	
C.1103	Cap for L.H. Front Hub	W.12	1	
C.3076/1	Nipple, Grease, in Front Hubs (Tec. NA.6658)	W.13	2	
NN.756/L	Nut, securing Hubs to Stub Axle Shafts	W.14	2	
C.3400	"D" Washer under Nuts	W.15	2	
L.104/10U	Pin, Split, securing Nuts	W.16	2	
C.8324	Ball-Pin at bottom of Stub Axle Carriers	W.17	2	
C.3024	Spigot over Ball Pins	W.18	2	
C.3025	Socket (Morganite) supporting Lower Ball Pins	W.19	2	
C.3026/1	Shim, between bottom of Stub Axle Carriers and Caps	W.20	As req'd	
C.3023	Cap, containing Ball Socket	W.21	2	
NS.137/9H	Screw, Set, securing Caps to Stub Axle Carriers	W.22	8	
C.3028	Lock Plate for Setscrews	W.23	4	
C.3362/1	Nipple, Grease, in Caps (Tec. NA.6674)	W.24	2	
C.10182	Wishbone Lever Assembly, R.H. Lower	W.25	1	} <b>Comprising parts listed on page 70.</b>
C.10183	Wishbone Lever Assembly, L.H. Lower	W.25	1	

# FRONT SUSPENSION

Part No.	Description	Plate No.	No. per Unit	Remarks
C.10182	<b>R.H. LOWER WISHBONE ASSEMBLY</b>	W.25	1	
C.10183	<b>L.H. LOWER WISHBONE ASSEMBLY</b>		1	
C.3013	<b>Wishbone Lever, Lower Front</b>	W.26	2	
C.4804	<b>Wishbone Lever, R.H. Lower Rear</b>	W.27	1	
C.4805	<b>Wishbone Lever, L.H. Lower Rear</b>		1	
C.3018	<b>Pin, for fixing of Lower Wishbone Levers and Front Shock Absorbers</b>	W.28	2	
NN.756/L	<b>Nut, securing Lower Wishbone Levers to Pins</b>	W.29	2	
C.794	<b>Washer, Special, under Nuts</b>	W.30	2	
L.104/10U	<b>Pin, Split, securing Nuts</b>	W.31	2	
C.3019	<b>Shaft, supporting Lower Wishbone Levers</b>	W.32	2	
C.3021	<b>Bush (Metalastik) in "eye" ends of Lower Wishbone Levers</b>	W.33	8	
C.3010/2	<b>Nut, securing Lower Wishbone Levers to Shafts</b>	W.34	4	
C.3114	<b>Washer, Special, under Nuts</b>	W.35	4	
L.105/12U	<b>Pin, Split, securing Nuts</b>	W.36	4	
C.8325	<b>Gaiter (Rubber) for Lower Ball Pins</b>	W.37	2	
C.8466	<b>Retainer inside Gaiter</b>	W.38	2	
C.8326	<b>Plate, securing Gaiter to Stub Axle Carrier</b>	W.39	2	
C.8327	<b>Clip, retaining Gaiter on Plate</b>	W.40	2	
C.3818	<b>Screw, Shakeproof, securing Retaining Plate to Stub Axle Carrier</b>		8	

## FIXINGS, ETC., FOR FRONT SUSPENSION

C.9755	<b>Packing Piece, between Upper Wishbone Shaft and Chassis Frame, for adjustment of Wheel Camber</b>		4	
C.3166/1	<b>Shim, between Upper Wishbone Shaft and Chassis Frame, for adjustment of Wheel Camber (.064" thick)</b>		As req'd	
C.3166/2	<b>Shim, between Upper Wishbone Shaft and Chassis Frame, for adjustment of Wheel Camber (.048" thick)</b>		As req'd	
C.3166/3	<b>Shim, between Upper Wishbone Shaft and Chassis Frame, for adjustment of Wheel Camber (.036" thick)</b>		As req'd	
C.8060	<b>Bolt, securing Upper Wishbone Shaft at top, to Chassis Frame</b>		4	
C.8150/9	<b>Nut, Self-Locking, on Bolts</b>		4	
NB.137/14D	<b>Bolt, securing Upper Wishbone Shaft at bottom, to Chassis Frame</b>		4	
C.8150/7	<b>Nut, Self-Locking, on Bolts</b>		4	
NB.137/10D	<b>Bolt, securing Lower Wishbone Shaft to Chassis Frame</b>		4	
C.3653	<b>Bolt, securing Lower Wishbone Shaft to Chassis Frame</b>		4	
C.8150/7	<b>Nut, Self-Locking, on Bolts</b>		8	
C.3010/2	<b>Nut, securing Stub Axle Shafts to Carriers</b>		2	
C.3114	<b>Washer, Special, under Nuts</b>		2	
L.105/12U	<b>Pin, Split, securing Nuts</b>		2	
NN.756/L	<b>Nut, securing Hubs to Stub Axle Shafts</b>		2	
C.3400	<b>"D" Washer under Nuts</b>		2	
L.104/10U	<b>Pin, Split, securing Nuts</b>		2	
NN.756/L	<b>Nut, securing Lower Rear Wishbone Levers to Lower Ball Pins</b>		2	
C.794	<b>Washer, Special, under Nuts</b>		2	
L.104/10U	<b>Pin, Split, securing Nuts</b>		2	

# FRONT SUSPENSION

Part No.	Description	Plate No.	No. per Unit	Remarks
C.7824	<b>R.H. FRONT BRAKE ASSEMBLY (LOCKHEED 35428)</b>		1	
C.7825	<b>L.H. FRONT BRAKE ASSEMBLY (LOCKHEED 35429)</b>		1	
NB.143/16D	<b>Bolt, securing Front Brake Assemblies to Stub Axle Carriers</b>		4	
C.3625	<b>Nut on Bolts</b>		4	
C.3004/4	<b>Washer under Nuts</b>		4	
L.103/7U	<b>Pin, Split, securing Nuts</b>		4	
C.7228	<b>FRONT BRAKE DRUM</b>		2	} <b>REQUIRED ONLY WHEN DISC ROAD WHEELS ARE FITTED.</b>
C.3078	<b>Screw, Set, locating Brake Drums on Front Hubs</b>		4	
C.3041	<b>Nut, securing Road Wheels to Front Hubs</b>		10	
C.6024	<b>FRONT BRAKE DRUM</b>		2	} <b>REQUIRED ONLY WHEN WIRE SPOKE ROAD WHEELS ARE FITTED.</b>
NN.143/L	<b>Nut, securing Brake Drums to Front Hubs</b>		10	
C.1096/1	<b>Washer, Spring, under Nuts</b>		10	
C.7220	<b>ANTI-ROLL BAR</b>	X.1	1	
C.4349	<b>Bearing (Rubber) for Anti-Roll Bar</b>	X.2	2	
C.3054	<b>Bracket holding Rubber Bearings</b>	X.3	2	
NB.137/6D	<b>Bolt, securing Bearing Brackets to Chassis Frame</b>	X.4	4	
NN.137/L	<b>Nut on Bolts</b>	X.5	4	
FG.106/X	<b>Washer, Spring, under Nuts</b>	X.6	4	
C.3049	<b>LINK AT EACH END OF ANTI-ROLL BAR</b>	X.7	2	
C.3050	<b>Bush (Rubber) in "eye" end of Link</b>	X.8	4	
C.3337	<b>Washer, Special, behind Rubber Bushes</b>	X.9	4	
L.105/10U	<b>Pin, Split, securing Link on Anti-Roll Bar</b>	X.10	2	

# FRONT SUSPENSION

Part No.	Description	Plate No.	No. per Unit	Remarks
C.3057	<b>BRACKET, ANCHORING LINK TO R.H. LOWER REAR WISHBONE LEVER</b>		1	
C.3058	<b>BRACKET, ANCHORING LINK TO L.H. LOWER REAR WISHBONE LEVER</b>	X.11	1	
NB.137/16D	<b>Bolt, securing Anchor Brackets to Lower Rear Wishbone Levers</b>	X.12	2	
NN.137/L	<b>Nut on Bolts</b>	X.13	2	
FG.106/X	<b>Washer, Spring, under Nuts</b>	X.14	2	
C.3053	<b>RUBBER BUFFER AT TOP OF LINK</b>	X.15	4	
C.793	<b>Washer, Special, under Lower Buffer</b>	X.16	2	
C.3052	<b>Washer, Special, at top of Upper Buffer</b>	X.17	2	
NN.743/L	<b>Nut, securing Links to Anchor Brackets</b>	X.18	2	
L.103/8U	<b>Pin, Split, securing Nuts</b>	X.19	2	
C.5719	<b>R.H. TORSION BAR</b>		1	
C.5720	<b>L.H. TORSION BAR</b>	X.20	1	
C.3047	<b>FLANGE FOR FRONT END OF TORSION BARS</b>	X.21	2	
C.3060	<b>Bolt, securing Flanges to Lower Rear Wishbone Levers</b>		2	
NN.756/L	<b>Nut on Bolts</b>		2	
C.794	<b>Washer, Special, under Nuts</b>		2	
L.104/10U	<b>Pin, Split, securing Nuts</b>		2	
NS.137/14F	<b>Screw, Set, securing Flanges to Lower Rear Wishbone Levers</b>		2	
FG.106/X	<b>Washer, Spring, on Setscrews</b>		2	
C.3461	<b>LEVER, FOR ADJUSTMENT OF TENSION ON R.H. TORSION BAR</b>		1	

# FRONT SUSPENSION

Part No.	Description	Plate No.	No. per Unit	Remarks
C.3462	<b>LEVER, FOR ADJUSTMENT OF TENSION ON L.H. TORSION BAR</b>	X.22	1	
NB.137/19D	<b>Bolt, locating Adjusting Levers on rear end of Torsion Bars</b>	X.23	2	
BD.541/1	<b>Washer on Locating Bolts</b>	X.24	2	
NN.137/L	<b>Nut on Bolts</b>	X.25	2	
FG.106/X	<b>Washer, Spring, under Nuts</b>	X.26	2	
NB.131/13D	<b>Bolt, clamping Adjusting Levers to Chassis Frame</b>	X.27	2	
NN.137/L	<b>Nut on Clamp Bolts</b>		2	
C.726	<b>Washer, Shakeproof, under Nuts</b>	X.28	2	
C.3096	<b>SPECIAL BOLT FOR ADJUSTMENT OF TORSION BARS</b>	X.29	2	
C.3098	<b>Trunnion on Adjusting Bolts</b>	X.30	2	
C.3097	<b>Nut, Special, on Adjusting Bolts</b>	X.31	2	

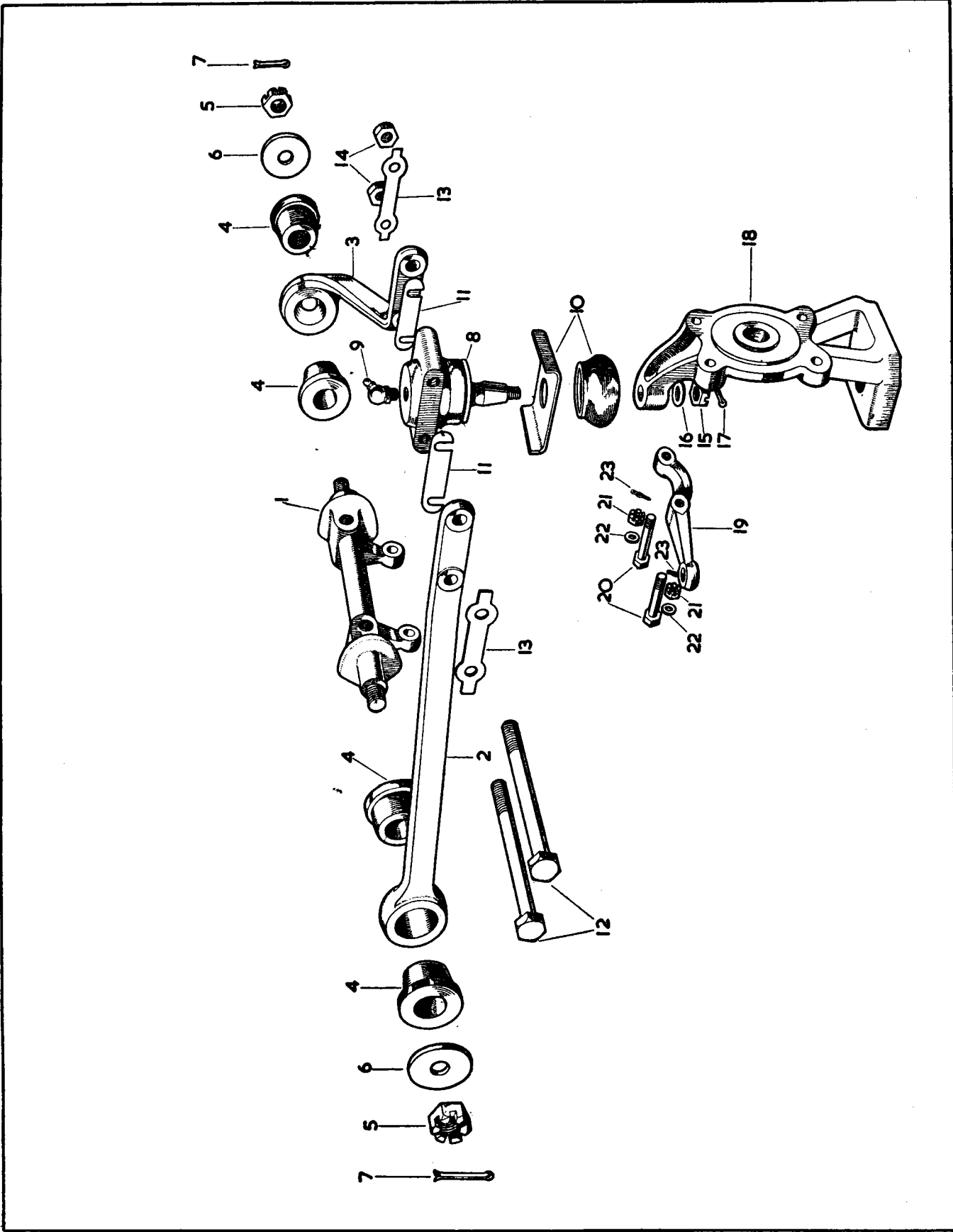


PLATE V

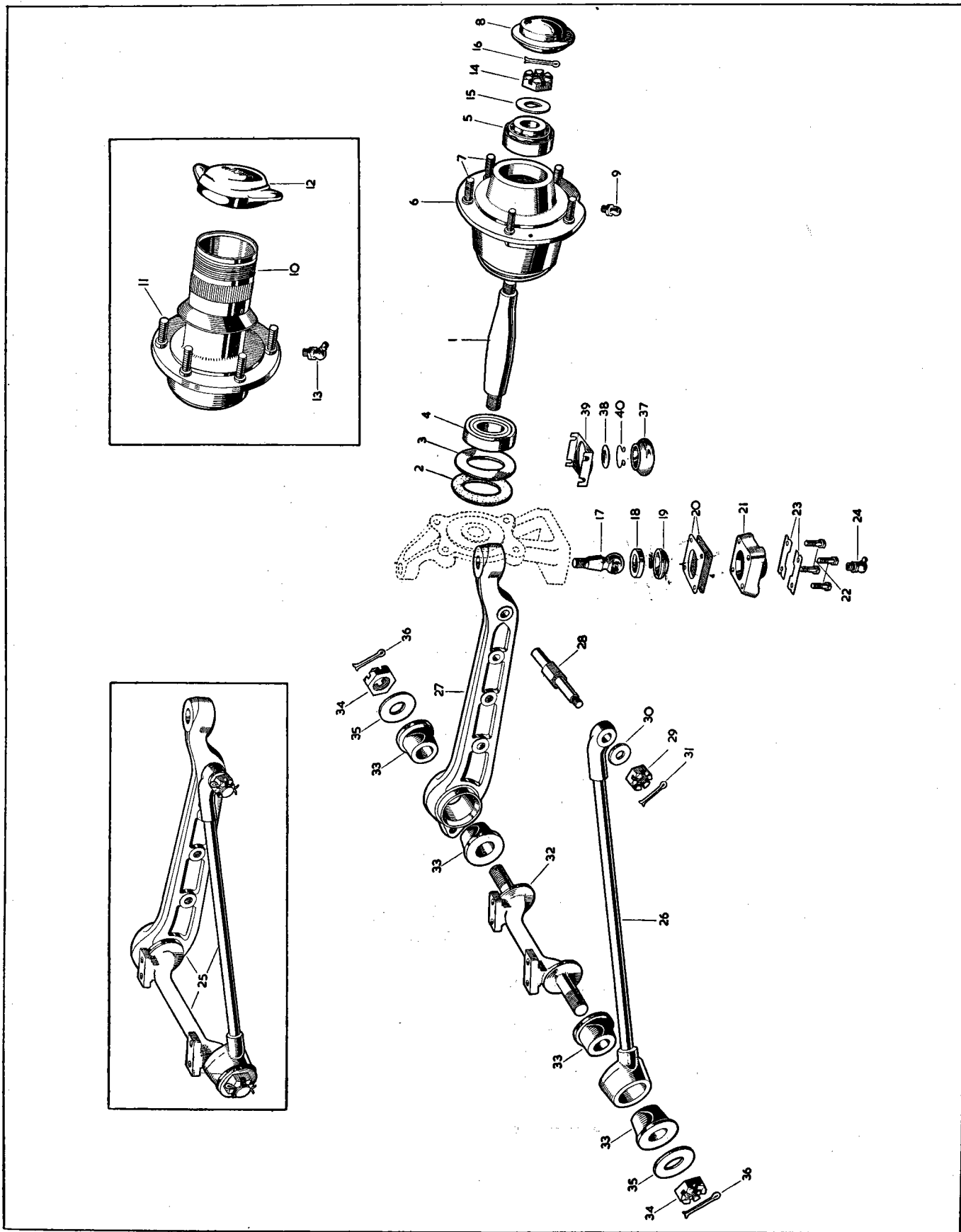


PLATE W

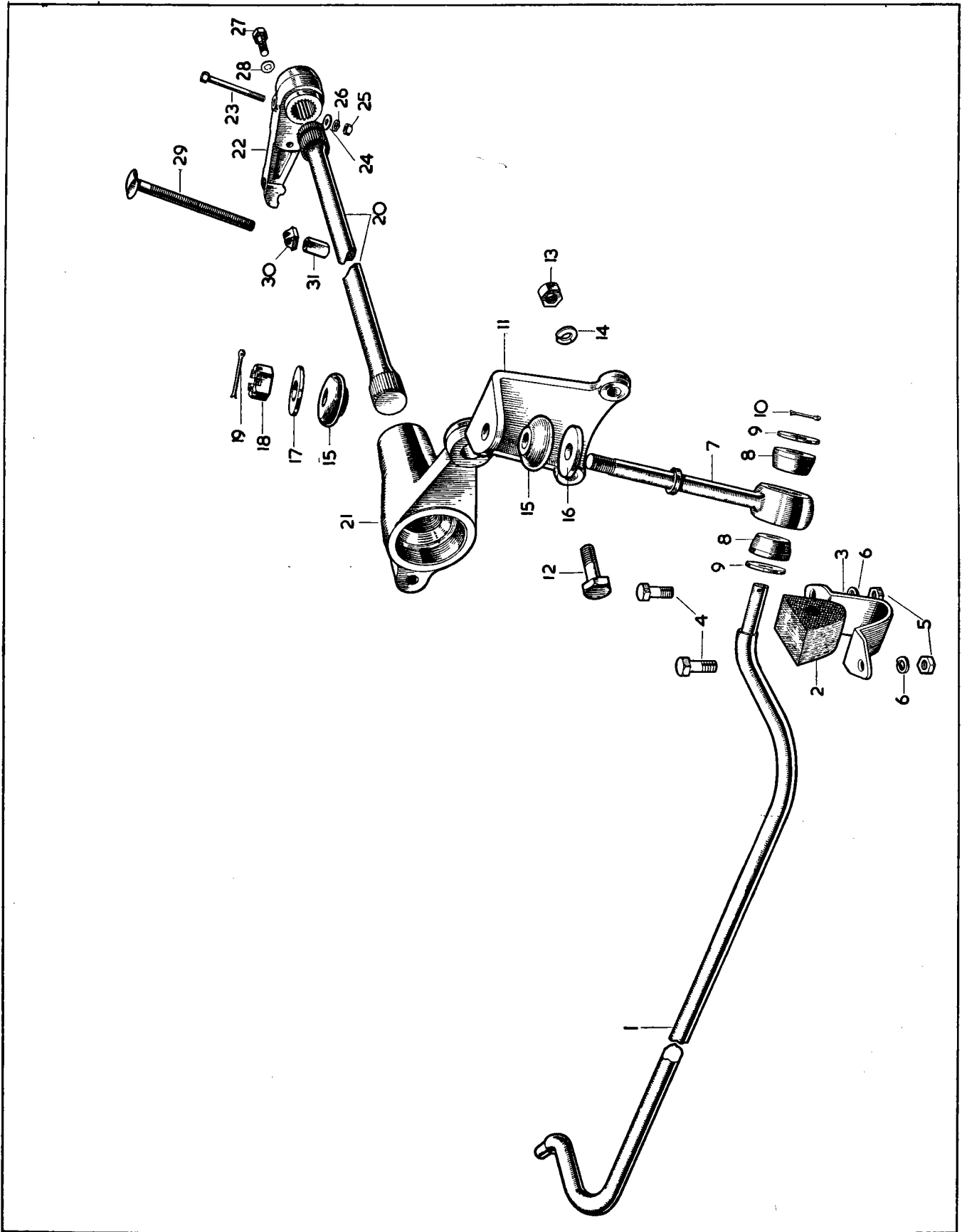


PLATE X



# ROAD WHEELS

Part No.	Description	Plate No.	No. per Unit	Remarks
C.6749	<b>DISC ROAD WHEEL (5½K RIM-LP.664)</b>		5	
C.3041	<b>Nut, securing Disc Wheels to Hubs</b>		20	
C.3243	<b>NAVE PLATE FOR DISC ROAD WHEELS</b>		4	
C.3367	<b>BADGE ("JAGUAR") FOR NAVE PLATE</b>		4	
AN.104/K. C.736	<b>Nut (Brass) securing Badges to Nave Plates Washer, Shakeproof, under Nuts</b>		8 8	
C.6838	<b>WIRE SPOKE ROAD WHEEL (X.445A)</b>		5	<b>SUPPLIED TO SPECIAL ORDER ONLY.</b>
C.3760	<b>TYRE (DUNLOP ROAD SPEED 6.00" × 16")</b>		5	
C.5636	<b>INNER TUBE (DUNLOP BUTYL 6.00" × 16')</b>		5	

# ROAD WHEELS

Part No.	Description	Plate No.	No. per Unit	Remarks
C.6649	TYRE (DUNLOP RACING 6.00" × 16")		5	} SUPPLIED TO SPECIAL ORDER ONLY.
C.6650	INNER TUBE (DUNLOP RACING 6.00" × 16")		5	
C.10156	TYRE (DUNLOP WHITE WALL)		5	SUPPLIED TO SPECIAL ORDER ONLY.
<b>BALANCE WEIGHTS FOR ROAD WHEELS</b>				<b>FOR USE ONLY WITH DISC ROAD WHEELS.</b>
C.3985	Balance Weight (½ oz.)		As req'd	
C.3986	Balance Weight (1 oz.)		As req'd	
C.3987	Balance Weight (1½ oz.)		As req'd	
C.3988	Balance Weight (2 oz.)		As req'd	
C.3989	Balance Weight (2½ oz.)		As req'd	
C.3990	Balance Weight (3 oz.)		As req'd	
C.8385	RIM-BELLISHER		4	SUPPLIED TO SPECIAL ORDER ONLY.