

STEERING UNIT

Part No.	Description	Plate No.	No. per Unit	Remarks
C.7099	RACK AND PINION ASSEMBLY, COMPLETE		1	FITTED TO R.H. DRIVE CARS at Chassis No. : 800001 to 800024. 807001 to 807055. 804001 to 804057.
C.7100	RACK AND PINION ASSEMBLY, COMPLETE		1	FITTED TO L.H. DRIVE CARS at Chassis No. : 810001 to 810858. 817001 to 817188. 814001 to 814009.
C.10624	Housing Assembly, for Pinion (complete with Bushes)		1	FITTED TO R.H. DRIVE CARS.
C.10625	Housing Assembly, for Pinion (complete with Bushes)		1	FITTED TO L.H. DRIVE CARS.
C.8473	Tube Assembly, housing Rack		1	
NS.131/5D	Screw, Set, securing Tube to Pinion Housing		3	
C.725	Washer, Shakeproof, on Setscrews		3	
C.7067	Rack only		1	
C.7606	Pinion only		1	
C.7653	Sleeve, Eccentric, in Pinion Housing, for adjustment of mesh between Pinion and Rack		1	
C.7566	Bearing (Torrington B.1816) at each end of Pinion Housing		2	
C.7060	Plate, at end of Pinion Housing, locating Bearing and Sleeve		1	
C.7061	Cover at end of Pinion Housing		1	
NS.131/6D	Screw, Set, securing End Cover		4	
C.725	Washer, Shakeproof, under Setscrews		4	
C.7654	Flange for adjustment of Eccentric Bearing		1	
C.7059	Seal, Oil, behind Adjusting Flange		1	
C.7655	Retainer, Inner, between Oil Seal and Adjusting Flange		1	
C.7656	Retainer, Outer, behind Oil Seal		1	
NS.131/6D	Screw, Set, securing Retainers and Adjusting Flange to Pinion Housing		4	
C.725	Washer, Shakeproof, on Setscrews		4	
C.3362/1	Nipple, Grease, at top of Pinion Housing (Tec.NA.6674)		1	
C.8475	Plunger, in Tube, applying friction to Rack		1	
C.8476	Spring, Tension, at top of Plunger		1	
C.8478	Cap, securing Plunger and Spring in Tube		1	
C.8477	Shim, for adjustment of tension on Plunger		As req'd	
C.8321	Tie Rod Assembly complete		2	
C.6623	Bellows (Rubber) between Tie Rods and Pinion Housing		2	
C.2905/2	Clip, securing Bellows to Tie Rods		2	
C.2905/4	Clip, securing Bellows to Pinion Housing		2	
C.7188	Washer, Tab, locking Inner Ball Joint to R.H. side of Rack		1	} Fitted from Chassis No. : 800001 to 800006. 810001 to 810567. 807001 to 807004. 817001 to 817096. 804001 to 804005.
C.8053	Washer, Tab, locking Inner Ball Joint to L.H. side of Rack		1	
C.8053	Washer, Tab, locking Inner Ball Joint at both ends of Rack		2	Fitted to Chassis No. : 800007 and subs. 810568 and subs. 807005 and subs. 817097 and subs. 804006 and subs. 814001 and subs.
C.8469	RACK AND PINION ASSEMBLY, AC.1 COMPLETE		1	FITTED TO R.H. DRIVE CARS at Chassis No. : 800025 and subs. 807056 and subs. 804058 and subs.

STEERING UNIT

Part No.	Description	Plate No.	No. per Unit	Remarks
C.8470	RACK AND PINION ASSEMBLY, COMPLETE		1	FITTED TO L.H. DRIVE CARS at Chassis No. : 810859 and subs. 817189 and subs. 814010 and subs.
C.10626	Housing Assembly , for Pinion (complete with Bushes)	AC.2	1	FITTED TO R.H. DRIVE CARS.
C.10627	Housing Assembly , for Pinion (complete with Bushes)		1	FITTED TO L.H. DRIVE CARS.
C.7652	Tube Assembly , housing Rack	AC.3	1	
NS.131/5D	Screw , Set, securing Tube to Pinion Housing	AC.4	3	
C.725	Washer , Shakeproof, on Setscrews	AC.5	3	
C.7067	Rack only	AC.6	1	
C.7606	Pinion only	AC.7	1	
C.7653	Sleeve , Eccentric, in Pinion Housing, for adjustment of mesh between Pinion and Rack	AC.8	1	
C.7566	Bearing (Torrington B.1816) at each end of Pinion Housing	AC.9	2	
C.7060	Plate , at end of Pinion Housing, locating Bearing and Sleeve	AC.10	1	
C.7061	Cover at end of Pinion Housing	AC.11	1	
NS.131/6D	Screw , Set, securing End Cover	AC.12	4	
C.725	Washer , Shakeproof, under Setscrews	AC.13	4	
C.7654	Flange for adjustment of Eccentric Sleeve	AC.14	1	
C.7059	Seal , Oil, behind Adjusting Flange	AC.15	1	
C.7655	Retainer , Inner, between Oil Seal and Adjusting Flange	AC.16	1	
C.7656	Retainer , Outer, behind Oil Seal	AC.17	1	
NS.131/6D	Screw , Set, securing Retainers and Adjusting Flange to Pinion Housing	AC.18	4	
C.725	Washer , Shakeproof, on Setscrews	AC.19	4	
C.3362/1	Nipple , Grease, at top of Pinion Housing (Tec.NA.6674)	AC.20	1	
C.8475	Plunger , at top of Pinion Housing applying friction to Rack	AC.21	1	
C.8476	Spring , Tension, at top of Plunger	AC.22	1	
C.8478	Cap , securing Plunger and Spring in Pinion Housing	AC.23	1	
C.8477	Shim , under Cap, for adjustment of tension on Plunger	AC.24	As req'd	
C.8321	Tie Rod Assembly , complete	AC.25	2	
C.6623	Bellows (Rubber) between Tie Rods and Pinion Housing	AC.26	2	
C.2905/2	Clip , securing Bellows to Tie Rods	AC.27	2	
C.2905/4	Clip , securing Bellows to Pinion Housing	AC.28	2	
C.8053	Washer , Tab, locking Inner Ball Joint at both ends of Rack	AC.29	2	
C.10624	PINION HOUSING ASSEMBLY		1	FITTED TO R.H. DRIVE CARS at Chassis No. : 800001 to 800024. 807001 to 807055. 804001 to 804057.
C.10625	PINION HOUSING ASSEMBLY		1	FITTED TO L.H. DRIVE CARS at Chassis No. : 810001 to 810858. 817001 to 817188. 814001 to 814009.
C.10628	Bush In ends of Pinion Housing		2	

STEERING UNIT

Part No.	Description	Plate No.	No. per Unit	Remarks
C.10626	PINION HOUSING ASSEMBLY	AC.2	1	FITTED TO R.H. DRIVE CARS at Chassis No. : 800025 and subs. 807056 and subs. 804058 and subs.
C.10627	PINION HOUSING ASSEMBLY		1	FITTED TO L.H. DRIVE CARS at Chassis No. : 810859 and subs. 817189 and subs. 814010 and subs.
C.10628	Bush in ends of Pinion Housing	AC.30	2	
C.8473	TUBE ASSEMBLY, HOUSING RACK		1	Fitted from Chassis No. : 800001 to 800024. 807001 to 807055. 804001 to 804057. 810001 to 810858. 817001 to 817188. 814001 to 814009.
C.7652	TUBE ASSEMBLY, HOUSING RACK	AC.3	1	Fitted to Chassis No. : 800025 and subs. 807056 and subs. 804058 and subs. 810859 and subs. 817189 and subs. 814010 and subs.
C.7103	Bearing in end of Rack Tube	AC.31	1	
C.8321	TIE ROD ASSEMBLY	AC.25	2	
C.8322	Ball Joint Assembly at ends of Steering Rack	AC.32	2	
C.8323	Ball Joint Assembly at outer ends of Tie Rod Tube	AC.33	2	
C.3362/I	Nipple, Grease, in Outer Ball Joint Assembly (Tec.NA.6674)	AC.34	2	
C.3020	Gaiter (Rubber) protecting Outer Ball Joints	AC.35	2	
C.8150/9	Nut, Self-Locking, on Outer Ball Pins	AC.36	2	
C.3165	Clamp, retaining Outer Ball Joints in Tie Rod Tube	AC.37	2	
NB.131/10D	Bolt, through Clamps	AC.38	2	
NN.131/L	Nut on Bolts	AC.39	2	
FG.105/X	Washer, Spring, under Nuts	AC.40	2	

STEERING UNIT

Part No.	Description	Plate No.	No. per Unit	Remarks	
C.8322	INNER BALL JOINT ASSEMBLY	AC.32	2		
C.7569	Shim, between Ball Cup and Screwed Socket (.004" thick)	AC.41	As req'd		
C.8472	Spring, Anti-Rattle, behind Shims	AC.42	2		
C.7605	Washer, Tab, securing Ball Housing	AC.43	2	FOR USE WITH SLOTTED TYPE BALL HOUSING. FOR USE WITH HEXAGON TYPE BALL HOUSING. at Chassis No. 800054 and subs. 811595 and subs. 807243 and subs. 817716 and subs. 804328 and subs. 814616 and subs.	
C.10027	Washer, Tab, securing Ball Housing		2		
C.7799	MOUNTING FOR RACK AND PINION STEERING ASSEMBLY	AC.44	2		
C.8024	Shim under Mounting (.048" thick)	AC.45	As req'd		
C.8249	Shim under Mounting (.048" thick)	AC.46	As req'd		
NS.231/7D	Screw, Set, securing Mountings to Frame	AC.47	8	} These Setscrews and Bolts must be secured with Locking Wire.	
NN.231/L	Nut on Setscrews		8		
C.725	Washer, Shakeproof, under Nuts		8		
C.7834	Screw, Set, securing Pinion Housing to Mounting at front end	AC.48	2		
C.8021	Bolt, securing Pinion Housing to Mounting at rear end	AC.49	2		
C.8022	Bridge-Piece on Bolts	AC.50	1		
C.8023	Sleeve on Bolts	AC.51	2		
C.7832	PLATFORM ASSEMBLY FOR SUPPORT OF RACK TUBE	AC.52	1		
NS.231/5D	Screw, Set, securing Platform to Mounting	AC.53	4		
C.725	Washer, Shakeproof, on Setscrews		4		
NS.137/6D	Screw, Set, securing Rack Tube to Platform	AC.54	2		
FW.106/T	Washer, Plain, on Setscrews	AC.55	2		
C.726	Washer, Shakeproof, on Setscrews	AC.56	2		

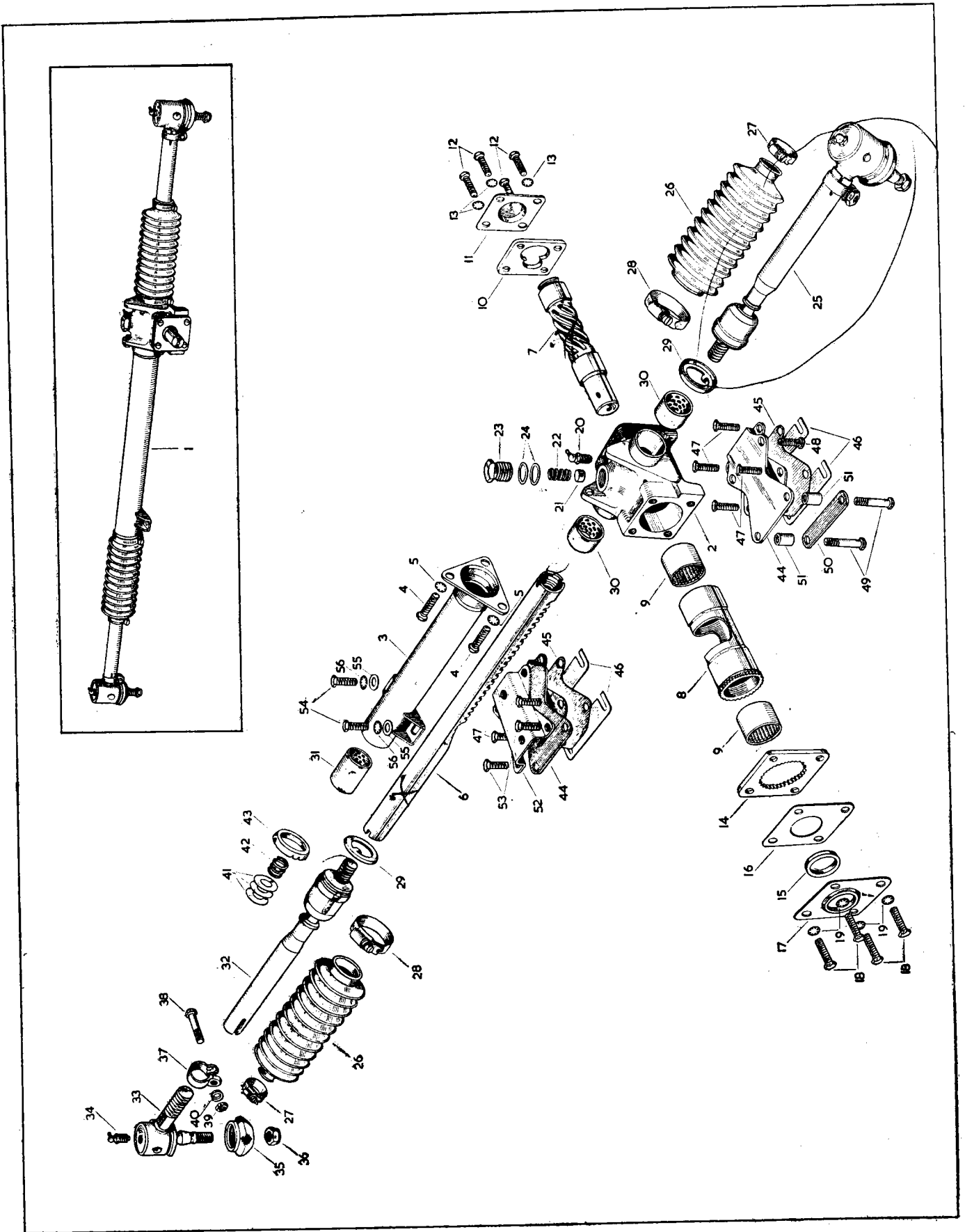


PLATE AC

STEERING COLUMN

Part No.	Description	Plate No.	No. per Unit	Remarks
C.7677	LOWER STEERING COLUMN ASSEMBLY	AD.1	1	FITTED TO OPEN AND DROP HEAD COUPE ONLY.
C.8845	LOWER STEERING COLUMN ASSEMBLY		1	FITTED TO FIXED HEAD COUPE ONLY.
C.6330	Pin, Taper, securing Lower Steering Column to Pinion and Upper Steering Column	AD.2	2	
NN.125/L	Nut on Taper Pins	AD.3	2	
C.724	Washer, Shakeproof, under Nuts	AD.4	2	
C.8083	UPPER STEERING COLUMN ASSEMBLY		1	FITTED TO OPEN CARS ONLY.
C.8120	Tube, Outer, Assembly (28-12-52.SA)	AD.5	1	
C.10367	Ball-Race complete, at top of Outer Tube (S.21/6)	AD.6	1	
C.10368	Ball-Race complete, at bottom of Outer Tube (S.22/7)	AD.7	1	
C.8090	Spring, locating top and bottom Ball-Races (36-11-3)	AD.8	2	
C.8091	Cover, at bottom of Outer Tube, holding lower Spring (S.8/9)	AD.9	1	
C.8092	Circlip, on Female Inner Column, retaining Spring Cover (31-8-3)	AD.10	1	
C.8078	Column, Inner, Female (S.3/143)	AD.11	1	
C.8084	Column, Inner, Male (S.3/141)	AD.12	1	
C.8085	Stop-Button in Male Inner Column (35-5-1)	AD.13	1	
C.10253	Clip, retaining Stop-Button		1	Fitted to Chassis No. 800053 and subs. :: 811590 and subs. 807241 and subs. :: 817708 and subs. 804326 and subs. :: 814604 and subs.
C.5533	Slip-Ring Assembly at lower end of Male Inner Column, for operation of Horns (Lucas 348261)		1	
C.7883	Locknut, clamping Male Inner Column on Telescopic Device		1	
C.8082	UPPER STEERING COLUMN ASSEMBLY		1	FITTED TO FIXED HEAD AND DROP HEAD COUPE ONLY.
C.8118	Tube, Outer, Assembly (28-12-51.SA)		1	
	All other details for Column C.8082 are as for Assembly C.8083.			
C.5533	HORN SLIP RING ASSEMBLY (LUCAS 348261)		1	
C.8152	Slip Ring only (348265)	AD.14	1	
C.8153	Cable Assembly (861622)	AD.15	1	
C.8154	Rotor, bottom half (348264)	AD.16	1	
C.8155	Rotor, top half (348263)	AD.17	1	
C.8156	Spring for Cable tension (348267)	AD.18	1	
C.8761	Contact for Cable Assembly (348266)	AD.19	1	

STEERING COLUMN

Part No.	Description	Plate No.	No. per Unit	Remarks
C.8157	CONTACT ASSEMBLY FOR HORN SLIP RING		1	
C.8158	Holder for Contact (348269)	AD.20	2	
C.8159	Contact (348268)	AD.21	1	
C.8161	Bolt, securing Contact to Holders (139444)	AD.22	1	
C.8160	Nut on Bolt (348270)	AD.23	1	
C.10650	Sleeve (Rubber) insulating Contact (348272)	AD.24	1	
NB.131/15D	Bolt, securing Upper Steering Column	AD.25	2	
C.8119	Spacer Tube on Bolts	AD.26	2	
C.8142	Spacing Washer for Bolt at top mounting of Upper Steering Column	AD.27	2	
FW.105/T	Washer, Plain, on Bolts		4	
NN.131/L	Nut on Bolts		2	
C.725	Washer, Shakeproof, under Nuts		2	
C.8093	GROMMET, BETWEEN UPPER STEERING COLUMN AND SCUTTLE	AD.28	1	
C.7883	LOCKNUT, AT TOP OF UPPER STEERING COLUMN, FOR CLAMPING OF TELESCOPIC DEVICE	AD.29	1	
C.10180	STEERING WHEEL (16")		1	SUPPLIED TO SPECIAL ORDER ONLY
C.7842	STEERING WHEEL (17")	AD.30	1	STANDARD FITTING.
C.1037	Grub Screw in Hub of Steering Wheel	AD.31	4	
C.1024	Dust Cover (Telescopic) between Locknut and bottom of Steering Wheel	AD.32	1	
C.3366	Cup (Large) at bottom of Telescopic Dust Cover	AD.33	1	
C.8576	Cup (Small) at top of Telescopic Dust Cover	AD.34	1	
C.8099	Distance Washer (Rubber) inside Large Cup	AD.35	1	FITTED TO ALL OPEN CARS. ALSO FITTED TO DROP HEAD AND FIXED HEAD COUPE AT THE FOLLOWING CHASSIS NOS. ONLY : 807001 to 807068. 817001 to 817301. 804001 to 804066. 814001 to 814097.
C.7878	Split Cone on Male Inner Column, for seating of Steering Wheel	AD.36	2 halves	
C.7879	Nut, securing Steering Wheel to Male Inner Column	AD.37	1	
C.8079	Washer (Bevelled) under Nut	AD.38	1	

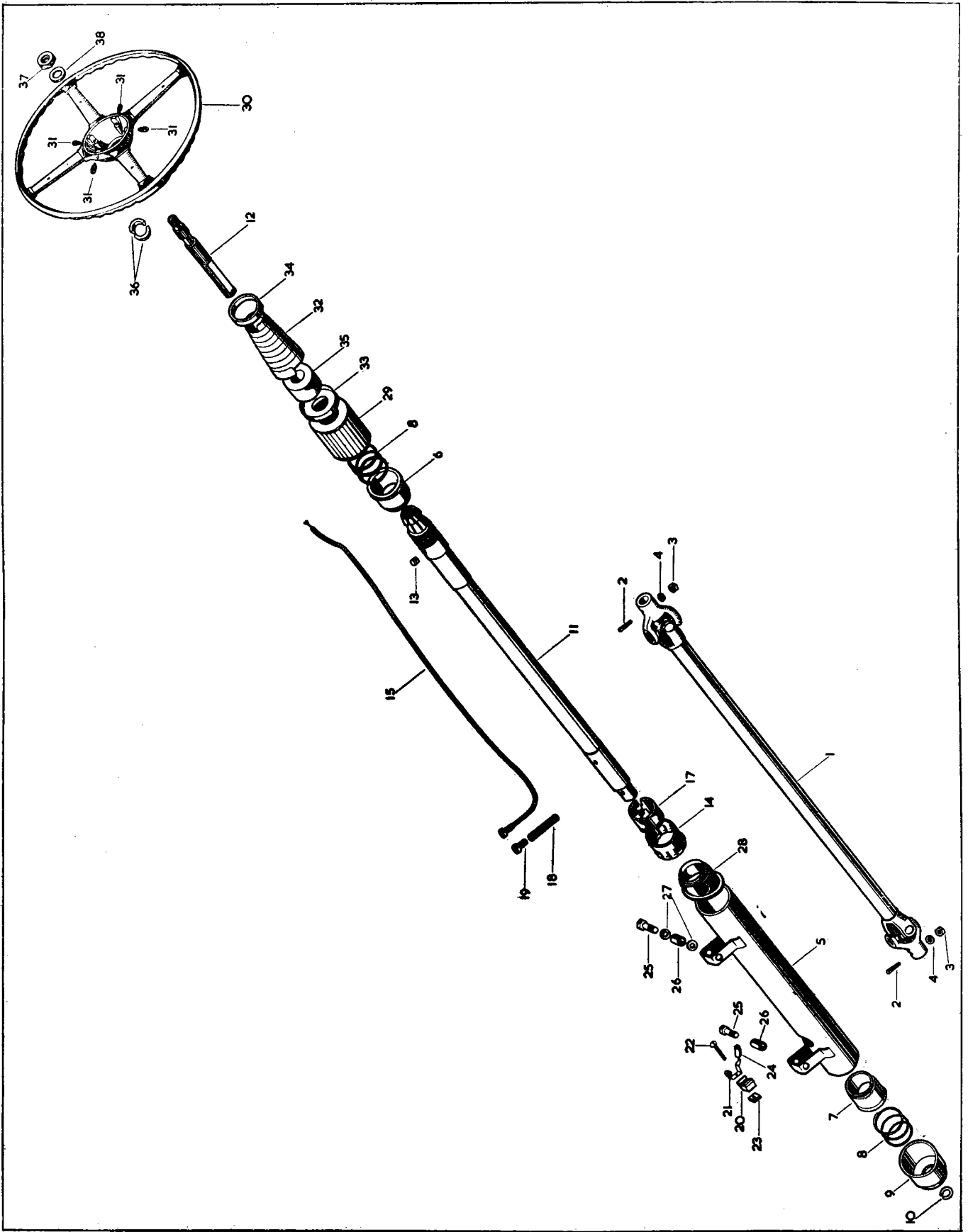


PLATE AD